

**EAT•N**

**Vickers™**

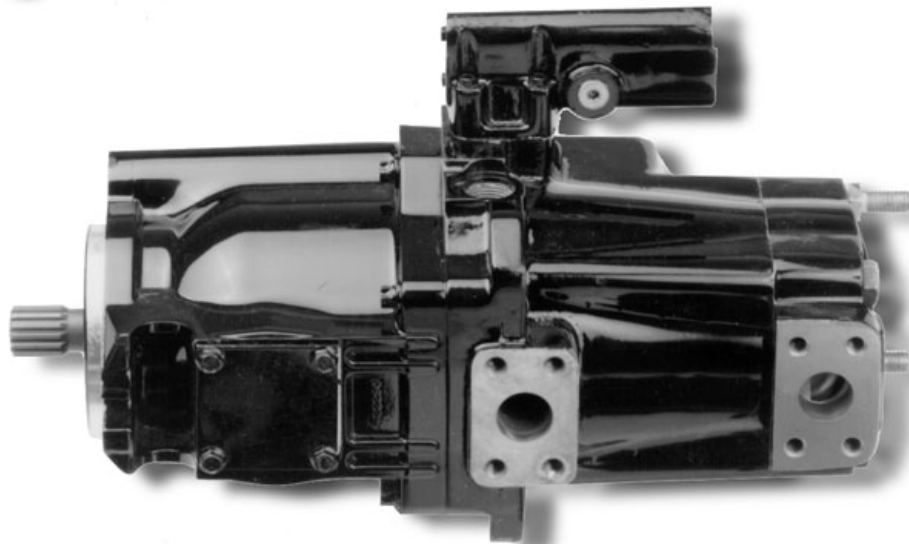
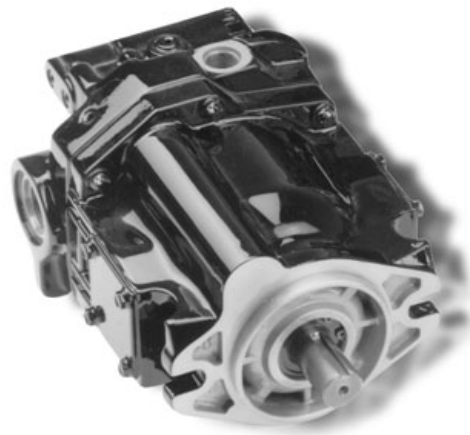
**PVE Piston Pumps**

Replaces GB-C-2023

Model PVE-12

Model PVE-19/21

Model PVE4\*-25V



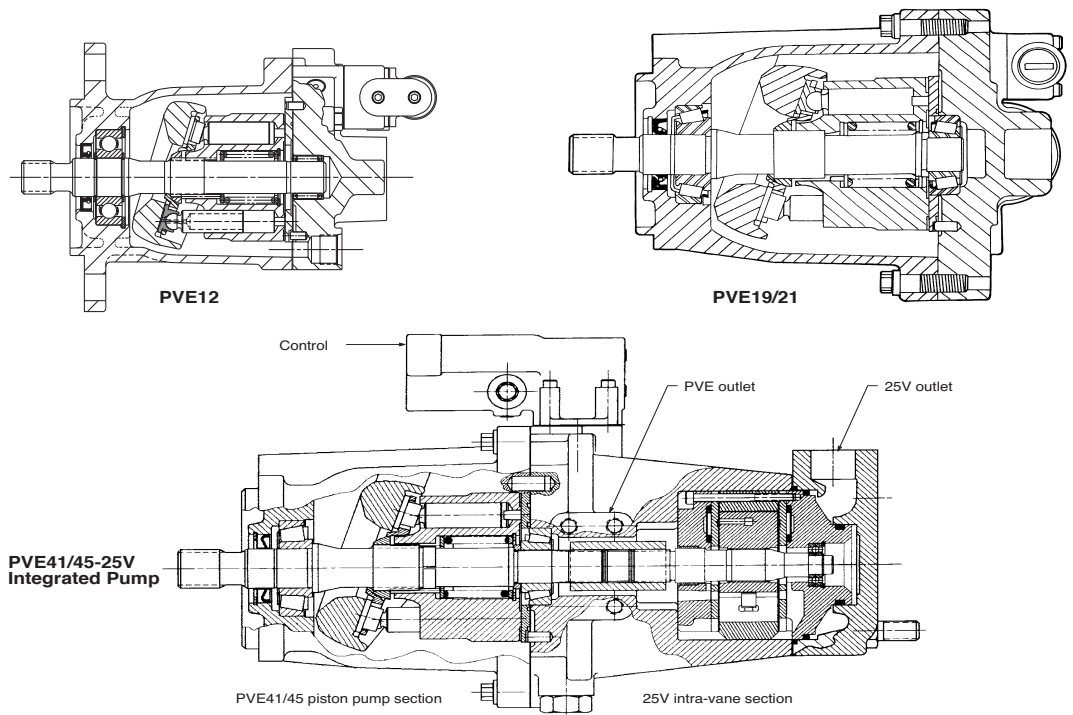
**VICKERS®**

# Table of Contents

Introduction .....	3
Controls .....	4
Operating Data .....	5
Displacement, Speed, and Pressure Ratings	
Overspeed Limits	
<b>E Series, PVE12</b>	
Model Number System .....	7
Shaft Torque Data .....	7
Performance Curves .....	8
Installation Dimensions .....	9
Shaft Options .....	9
Controls .....	10
Adjustable Maximum Volume Stop	
Load Sensing with Pressure Limiter	
Remote Adjustment Compensator	
<b>PVE19/21</b>	
Model Number System .....	12
Shaft Torque Data .....	13
Typical Rear Pumps for Thru-drives .....	13
Performance Curves .....	14
PVE19	
PVE 21	
Installation Dimensions .....	16
Side Ports and C-type Control	
End Ports and C-type Control	
Controls .....	18
Adjustable Maximum Volume Stop	
Load Sensing with Pressure Limiter	
Remote Adjustment Compensator	
Unloading Valve	
Valves - Constant Flow Adapter	
Shaft Options .....	22
Thru-drives	
PVE19/21 SAE "A" .....	23
PVE19/21 SAE "B" .....	24
<b>PVE4*-25V</b>	
Model Number System .....	25
Shaft Torque Data .....	25
Performance Curves .....	26
Controls .....	28
Installation Dimensions .....	29
Application Data .....	30

# Introduction

Eaton PVE piston pumps are inline, variable displacement pumps that are available in three displacement sizes. An assortment of optional controls offer maximum operating flexibility. Pump displacement is varied by means of pressure and/or flow compensator controls.



## PVE Integrated Pump

A unique integrated pump package is also available. This package includes a 72 or 79 l/min (19 or 21 USgpm at 1800 r/min) PVE piston pump and a 25V fixed intra-vane pump in a single inlet, double outlet ported

unit. This compact package is used in a wide variety of circuits with both fixed and variable flow requirements. The result is lower installed costs as only one mounting pad and one inlet line are needed for the two independent pumps.

## Features and Benefits

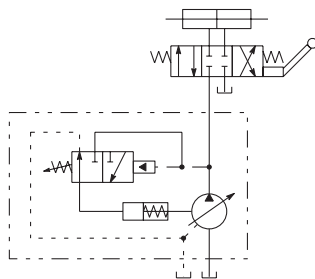
- Inline, variable displacement pump
- Three displacement sizes
- Displacement is varied by pressure/flow compensator controls
- Optional controls for maximum operating flexibility
- Thru-drive available on PVE 19/21
- Unique integrated pump package also available

## Pressure Compensator Control, "A" Option

This control automatically varies pump displacement to meet the system flow demand for a constant system pressure. Displacement starts to reduce to zero within 14 bar (200 psi) of the compensator setting. Power draw-off is minimized, therefore, system relief valves should not be required.

## Pressure Compensator Control with Maximum Displacement Adjustment

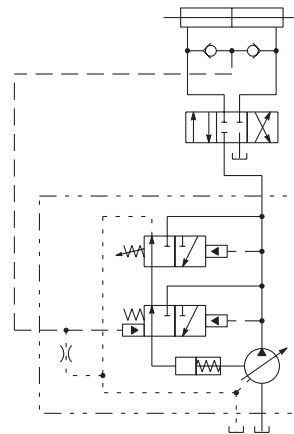
As indicated for "A" option above, except there is an independent screw adjustment of maximum displacement from 100% (rated) to 25%.



**Note:** Graphic symbols shown with external valve(s) and cylinder to illustrate typical usage.

## Load Sensing Compensator and Pressure Limiter, "B" Option

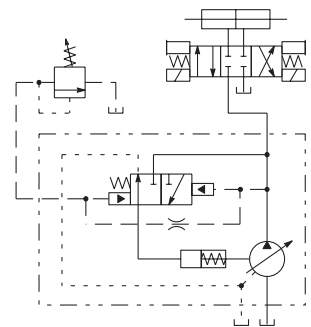
This compensator provides load sensing control under all pressure conditions up to the desired maximum. It automatically adjusts pump flow in response to a remote pressure signal and maintains outlet pressure at approximately 11 bar (160 psi) above load pressure. The integral pressure limiter overrides the load sensing control, reducing pump displacement as the preset maximum operating pressure is reached. Override begins within 14 bar (200 psi) of the preset maximum pressure compensator setting. A 24 bar LS option is also available.



**Note:** Optional internal bleed orifice diameter is .015" and is "A" option-control special features.

## PVE with Pressure Compensator Arranged for Remote Control, "D" Option or "J" Option

Exactly the same as the "A" (pressure compensation option) except the machine operator is able to change the compensator setting through the use of a remote pilot relief valve.



**Note:** A kit is available for an electrical dual pressure compensator. This control automatically adjusts pump delivery to maintain system volume requirements at either of two preselected operating pressures. This allows lower settings for low horsepower start-up, equipment testing, etc. This kit also allows for higher pressure settings as required in machine applications. For details refer to service drawing I-3255-S.

# Operating Data

## Displacement, Speed, and Pressure Ratings

### Preparation for Start-up

Before starting a PVE pump, fill the case through the uppermost drain port with clean system hydraulic fluid. The case drain line must be connected to the reservoir below oil level. For multiple pump arrangements that include non-PVE sections, the requirements of the non-PVE units must also be considered.

### Mounting

Eaton Hydraulics recommends these PVE series piston pumps be mounted horizontally.

### DISPLACEMENT, SPEED AND PRESSURE RATINGS

Model Number System	Displacement cm <sup>3</sup> /r (in <sup>3</sup> /r)		Rated Input Speed (At 0 psig Inlet)	Maximum Pressure bar (psi)	
	Shaft End Pump	Cover End Pump		Shaft End	Cover End
PVE12	25 (1.54)	–	3000	210(3000)	–
PVE19	41 (2.50)	–	2400	210(3000)	–
PVE21	45 (2.75)	–	2400	186(2700)	–
PVE41-25V40M (mobile)	41 (2.50)	40 (2.44)	2400	210(3000)	210(3000)
PVE41-25V45M (mobile)	41 (2.50)	45 (2.75)	2400	210(3000)	210(3000)
PVE41-25V55M (mobile)	41 (2.50)	55 (3.36)	2400	210(3000)	210(3000)
PVE41-25V67M (mobile)	41 (2.50)	67 (4.09)	2400	210(3000)	210(3000)
PVE45-25V40M (mobile)	45 (2.75)	40 (2.44)	2400	186(2700)	210(3000)
PVE45-25V45M (mobile)	45 (2.75)	45 (2.75)	2400	186(2700)	210(3000)
PVE45-25V55M (mobile)	45 (2.75)	55 (3.36)	2400	186(2700)	210(3000)
PVE45-25V67M (mobile)	45 (2.75)	67 (4.09)	2400	186(2700)	210(3000)
PVE41-25V40I (quieted)	41 (2.50)	40 (2.44)	1800	210(3000)	172(2500)
PVE41-25V45I (quieted)	41 (2.50)	45 (2.75)	1800	210(3000)	172(2500)
PVE41-25V55I (quieted)	41 (2.50)	55 (3.36)	1800	210(3000)	172(2500)
PVE41-25V67I (quieted)	41 (2.50)	67 (4.09)	1800	210(3000)	172(2500)

### PRESSURE LIMITS

Port	Pressure Range
Inlet**	0,2 bar to 2,0 bar (5 in. Hg. vacuum to 30 psi)
Outlet	See Maximum Pressures listed above
Drain*	0,35 bar (5 psig) maximum

\*Integral relief valve protects pump by limiting case pressure peaks to 0,7 bar (10 psi) above inlet pressure. Flow from valve returned directly to pump inlet. Case drain line required to limit steady-state case pressure.

\*\*See page 6 for Inlet vs. Speed details.

# Operating Data

## Overspeed Limits

### AT FULL FLOW CONDITIONS

Displacement cm <sup>3</sup> /r (in <sup>3</sup> /r)	Inlet Pressure/Vacuum*	Maximum Speed** rpm
PVE21 full displacement 45 (2.75)	5 psig	2800
	0 psig	2400
PVE19 full displacement 41 (2.50)	5 in. Hg.	2100
	5 psig	3100
PVE19/21 destroked 33 (2.00)	0 psig	2750
	5 in. Hg.	2500
PVE19/21 destroked 25 (1.50)	5 psig	3200
	0 psig	3000
	5 in. Hg.	2850

PVE12 limited to 3000 rpm at full displacement and 0 psig inlet.

\*Minimum pressure/vacuum required at pump inlet to operate at displacement and speed listed.

\*\*Speeds not listed, but within displacements shown above, may be calculated from values listed.

### AT LOAD SENSE STANDBY CONDITION – “B” OPTION CONTROLS

Model Number System	Maximum Speed rpm
PVE12	3600
PVE19	3200
PVE21	3200

Pump must be in zero flow, low pressure, standby condition when operated at listed speed. Pump may be damaged if not slowed to normal rated speed before being operated at full flow.

### Response Data

Yoke response recorded at rated speed and pressure, 0 psi inlet, 82°C (180°F), SAE 10W oil. Pressure rise was 6900 bar (100,000 psi) per second.

Control Type	PVE12		PVE19/21	
	On Stroke sec.	Off Stroke sec.	On Stroke sec.	Off Stroke sec.
Pressure compensator	0.030	0.012	0.050	0.025
Load sense compensator	0.040	0.012	0.060	0.020

### Sound Data

Sound level dB(A) per ISO 4412-1 standard.

Model Number System	1200 rpm, 70 bar (1000 psi)		1500 rpm, 140 bar (2000 psi)		1800 rpm, 210bar (3000 psi)	
	Full Stroke dB(A)	Compensated Stroke dB(A)	Full Stroke dB(A)	Compensated Stroke dB(A)	Full Stroke dB(A)	Compensated Stroke dB(A)
PVE12	71	65	76	72	77	77
PVE19	79	74	83	85	86	87
PVE21	75	73	79	81	83*	83*

\*2700 psi

# Model Number System

## E Series, PVE12 Pump

**EXAMPLE MODEL NUMBER SYSTEM:** PV E012 R 0 1 AU B 0 B 33 24 00 A 1 00 1 00 CD 0 A  
 (Position) 12 3,4,5,6 7 8,9 10 11 12 13 14 15,16 17 18 19 20 21 22 23,24 25 26,27 28,29 30 31

Nos	Feature	Code	Description	Nos	Feature	Code	Description
1,2	Code title	PV	Open circuit piston pump			G	Adjustable pressure compensator (PVE12 only)
3,4,5,6	Displacement	E012	25.2cm <sup>3</sup> /r [1.54 in <sup>3</sup> /r]			H	Adjustable pressure and flow compensator (PVE12 only)
7	Input shaft rotation	L R	Left-hand rotation (CCW) Right-hand rotation (CW)			J	Adjustable hydraulic remote control pressure compensator (PVE12 only)
8,9	Front mounting and input shaft	01 05 09	2 Bolt B (SAE J744-101-2) with 22.2 [.88] DIA straight key shaft (SAE J744-22-1), key included 2 Bolt B (SAE J744-101-2) with 13T 16/32DP 41.1 [1.62] long splined shaft 2 Bolt B (SAE J744-101-2) with 26T 32/64DP splined shaft	15,16	Pressure comp./ unloading valve setting	00 33	No pressure compensator setting 206.8-213.7 bar [3000-3100 lbf/in <sup>2</sup> ]
<b>Note:</b> Consult an Eaton representative for additional options				17,18	Flow comp. setting or unload valve standby	00 11 24	No flow compensator setting 9.65-12.41 bar [140-180 lbf/in <sup>2</sup> ] 22.75-25.51 bar [330-370 lbf/in <sup>2</sup> ]
10,11	Main ports location and size	AU AV	End ports; tube ports per SAE J514, suction 1.625-12 UN-2B SAE, pressure – 1.0625-12 UN-2B SAE End ports; tube ports per ISO 6149-1, suction M42 x 2, pressure – M27 x 2	<b>Note:</b> Consult an Eaton representative for additional options			
12	Drain port size	6 7 B C	M18 metric O-ring port – top (D1) M18 metric O-ring port – bottom (D2) .750-16 UNF-2B SAE O-ring port – top (D1) .750-16 UNF-2B SAE O-ring port – bottom (D2)	19,20	Secondary compensator setting	00 04	No secondary compensator setting 186.2-193.1 bar [2700-2800 lbf/in <sup>2</sup> ]
<b>Note:</b> Consult an Eaton representative for additional options				21	Control special features	0 A B G J	No special features Bleed down orifice, LS only External load-sensing adjustment High rate spring for low pressure setting Bleed down orifice and high rate spring for low pressure setting
13	Diagnostic pressure port	0	No diagnostic pressure port	22	Maximum displacement option	1 2	Standard displacement Adjustable maximum displacement (set at maximum)
14	Controller type	A B C D E F	Pressure compensator Pressure and flow compensator Electric dual range pressure Compensator with directional control valve Hydraulic remote control pressure compensator Unloading valve (accumulator Circuits) Electric dual range pressure compensator without directional control valve	23,24	Auxiliary mounting and output shaft	00	No auxiliary mounting or output shaft
				25	Shaft seals	0 1	No shaft seal Standard shaft seal (nitrile)
				26,27	Special features	00 AF	No special features Cast iron housing
				28,29	Paint	00 CD	No paint Blue primer
				30	Customer and unit identification	0	STD – mark assembly Number, model number system Up to rotation and build data Code on plate
				31	Design code	A	First

## Shaft Torque Data

### PVE12

#### PVE12 SHAFT TORQUE DATA

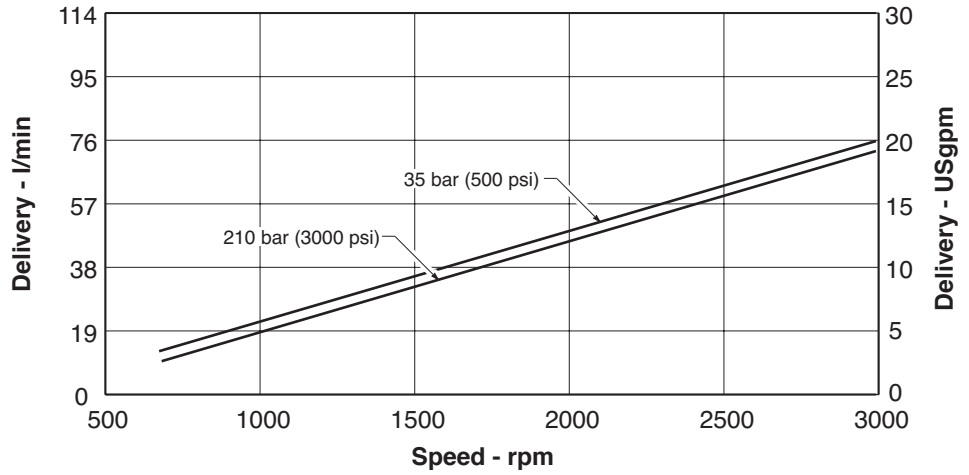
Input Shaft Torque N.m (lb.in.)	Designation	Thru-drive Option	Maximum Input
01	SAE "B" straight keyed	No	135 (1200)
05	SAE "B" spline 13T, 16/32 D.P., FRMDF	No	208 (1850)
09	Special Eaton 26T for use in rear pump of tandem PVE**-PVE12 unit	No	N/A

# Performance Curves

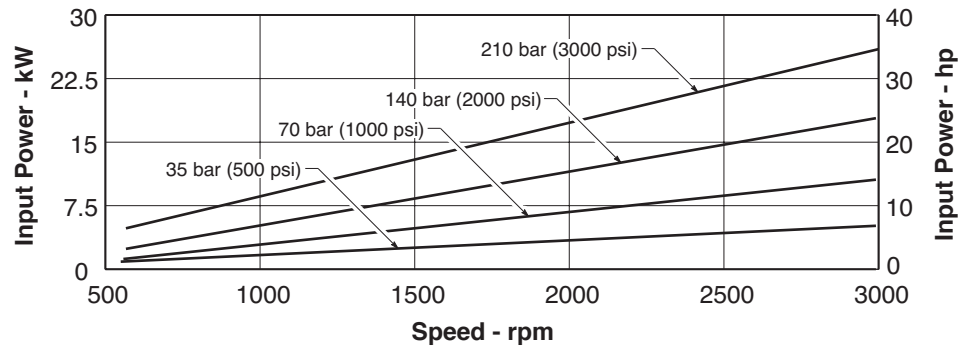
## PVE12

Oil type: SAE 10W  
 Oil temperature: 82°C (120°F)  
 Inlet pressure: 0 psi

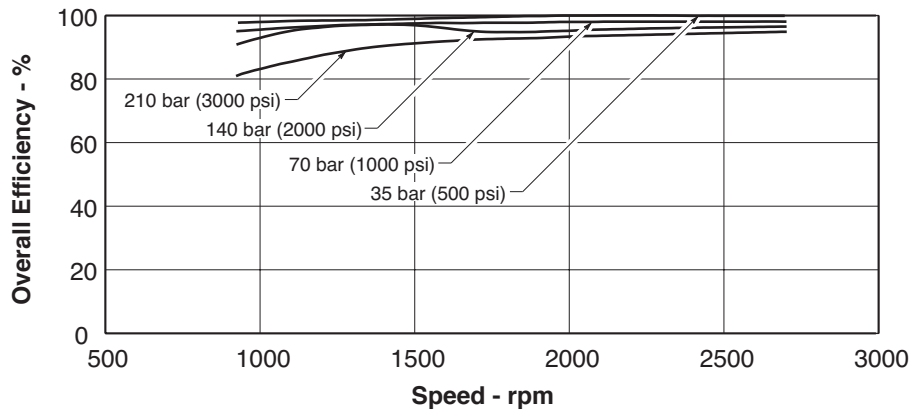
Effective Flow Versus Speed



Input Power Versus Speed



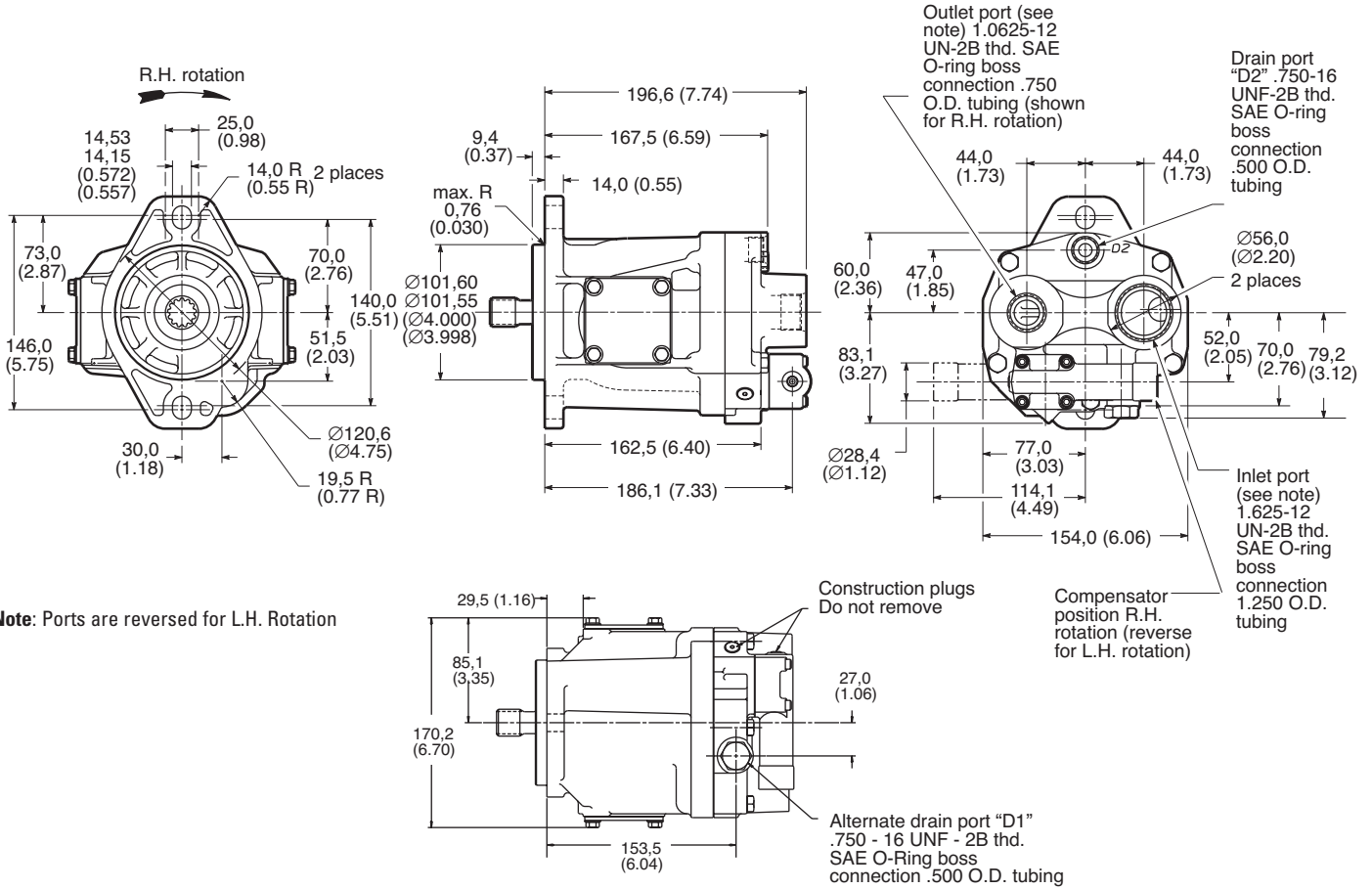
Volumetric Efficiency Versus Speed





# Installation Dimensions

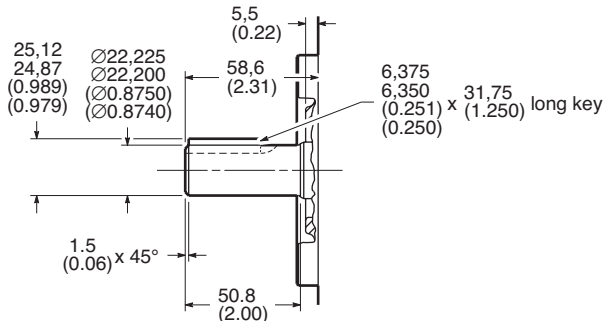
## PVE12 with Pressure Compensator, Load Sensing Controls



**Note:** Ports are reversed for L.H. Rotation

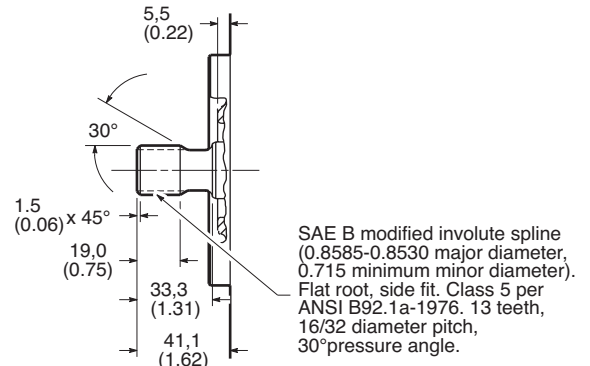
## PVE12 Shaft Options

### #01: SAE "B" Straight Keyed



**Note:** Applications requiring overhung load or side loading of shaft are subject to Eaton engineering approval.

### #05: SAE "B" Splined



# Controls

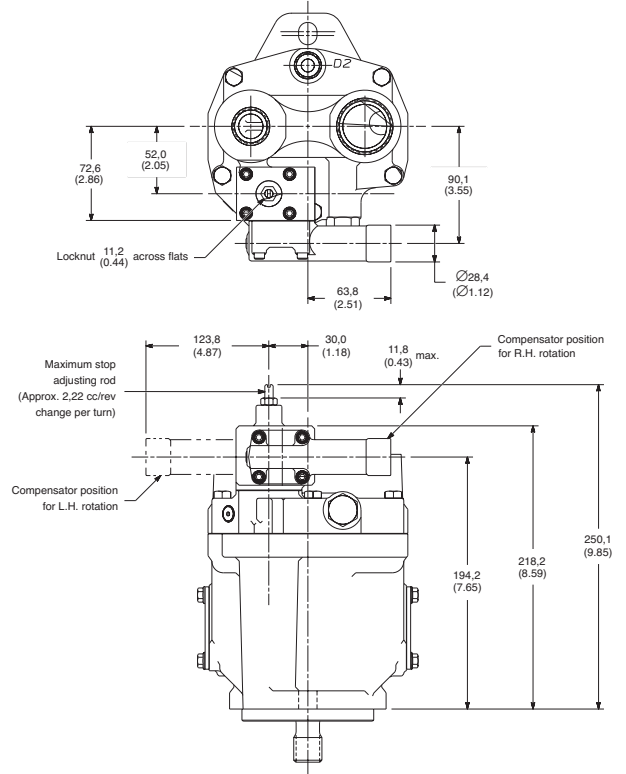
## PVE12 Adjustable Maximum Displacement Stop

See installation dimensions page 9 for other details.

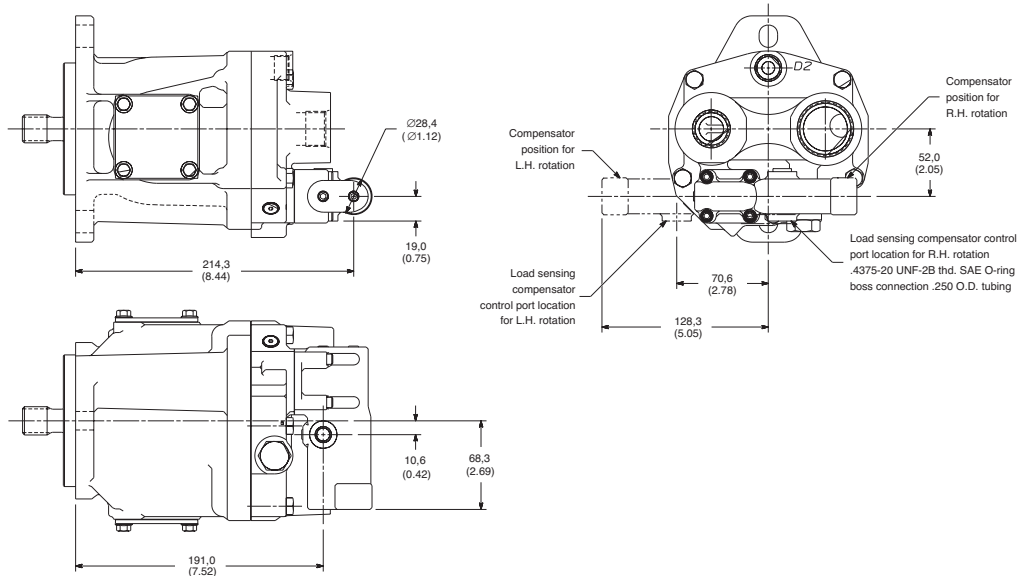
### Adjustment

Loosen the locknut on the adjusting rod. Turn the adjusting rod clockwise to decrease maximum pump delivery, or counterclockwise to increase maximum pump delivery, until the desired setting is obtained. Secure the setting by tightening the locknut. To assist initial priming, the manual adjustment control setting must be at least 40% of the maximum flow position.

This control enables maximum pump delivery to be externally adjusted from 25% to 100% while maintaining all the standard features of a pressure compensated pump.



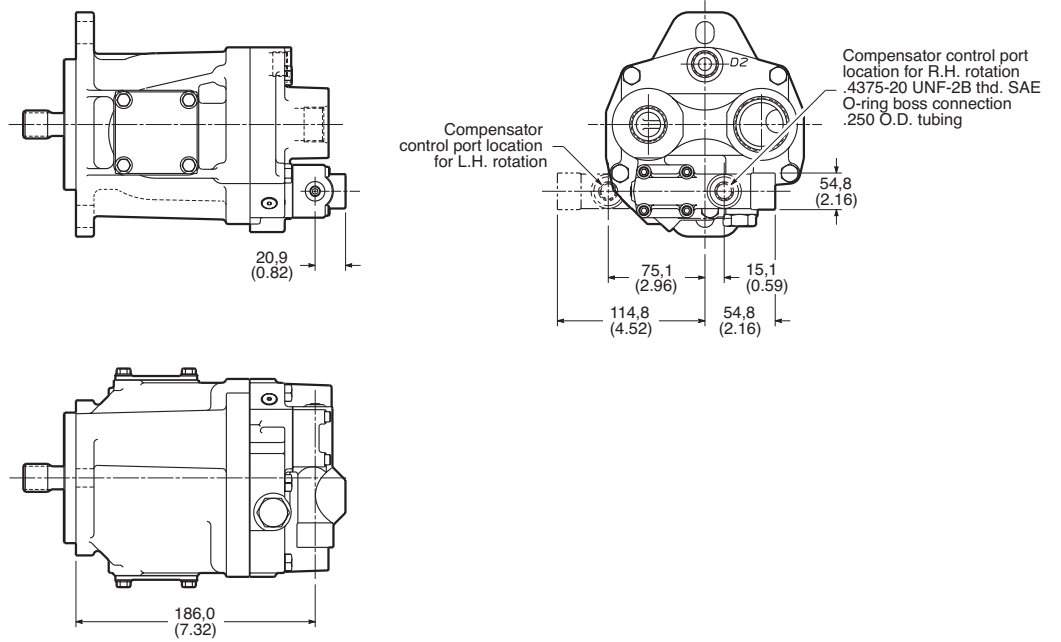
## PVE12 Load Sensing with Pressure Limiter "A" Control Option



# Controls

## PVE12 Remote Adjustment Compensator

See installation dimensions page 9 for other details.



# Model Number System

## PVE19/21

**EXAMPLE MODEL NUMBER SYSTEM:** PV E190 R 0 1 AA 1 0 B 33 24 00 A 1 AA 1 AF CD 0 A  
 (Position) 12 3,4,5,6 7 8,9 10 11 12 13 14 15,16 78 90 21 22 23,24 25 26,27 28,29 30 31

Nos	Feature	Code	Description	Nos	Feature	Code	Description
1,2	Code title	PV	Open circuit piston pump	15,16	Pressure comp./ unloading valve	00 18 33	No pressure compensator setting 182.7-189.6 bar [2650-2750 lbf/in <sup>2</sup> ] 206.8-213.7 bar [3000-3100 lbf/in <sup>2</sup> ]
3,4,5,6	Displacement	E190 E210	41.0cm <sup>3</sup> /r [2.50 in <sup>3</sup> /r] 45.1cm <sup>3</sup> /4 [2.75 in <sup>3</sup> /r]	<b>Note:</b> Consult an Eaton representative for additional options			
7	Input shaft rotation	L R	Left-hand rotation (CCW) Right-hand rotation (CW)	17,18	Flow comp. setting or unload valve standby	00 11 14 24	No flow compensator setting 9.65-12.41 bar [140-180 lbf/in <sup>2</sup> ] 12.41-15.17 bar [180-220 lbf/in <sup>2</sup> ] 22.75-25.51 bar [330-370 lbf/in <sup>2</sup> ]
8,9	Front mounting and input shaft	01 02 04 05 08 09	2 Bolt B (SAE J744-101-2) with 22.2 [1.88] DIA straight key shaft (SAE J744-22-1) (key included) 2 Bolt B-B(SAE J744-101-2) with 25.4 [1.00] DIA straight key shaft (SAE J744-25-1) (key included) 2 Bolt B (SAE J744-101-2) with 25.4 [1.00] DIA tapered key shaft (SAE J744-25-3) (key included) 2 Bolt B (SAE J744-101-2) with 13T 16/32DP 41.1 [1.62] long splined shaft 2 Bolt B-B (SAE J744-101-2) with 15T 16/32DP splined shaft 2 Bolt B (SAE J744-101-2) with 26T 32/64DP splined shaft	<b>Note:</b> Consult an Eaton representative for additional options			
<b>Note:</b> Consult an Eaton representative for additional options				19,20	Secondary compensator setting	00 04	No secondary compensator setting 186.2-193.1 bar [2700-2800 lbf/in <sup>2</sup> ]
10,11	Main ports location and size	AA AB AC AD AE AF AS	Side ports; tube ports per SAE J514, suction – 1.875-12 UN-2B, pressure – 1.3125-12 UN-2B End ports; tube ports per SAE J514, suction – 1.875-12 UN-2B, pressure – 1.3125-12 UN-2B Side ports; SAE J518 flange, suction – 1.500 SAE 4-bolt split flange port (code 61); pressure – 1.000 SAE 4-bolt split flange port (code 61) End ports; SAE J518 flange, suction – 1.500 SAE 4-bolt split flange port (code 61); pressure – 1.000 SAE 4-bolt split flange port (code 61) Side ports; ISO 6149-1 tube, suction – M48 X 2, pressure – M33 X 2 End ports; ISO 6149-1 tube, suction – M48 X 2, pressure – M33 X 2 End ports; ISO 6162 flange, suction – 1.500 SAE 4-bolt split flange port with M12 X 1.75 threads; pressure – 1.000 SAE 4-bolt split flange port with M10 X 1.5 threads	21	Control special features	0 A B G J	No special features Bleed down orifice External load-sensing adjustment High rate spring for low pressure setting Bleed down orifice and high rate spring for low pressure setting
12	Drain port size and location	1 2 6 7	.875-14 UNF-2B SAE O-ring port – top (D1) .875-14 UNF-2B SAE O-ring port – bottom (D2) M18 X 1.5 metric O-ring port – top (D1) M18 X 1.5 metric O-ring port – bottom (D2)	22	Maximum displacement option	1 2	Standard displacement Adjustable maximum displacement (set at maximum)
13	Diagnostic pressure port	0 1 2	No diagnostic pressure port .4375-20 UNF-2B SAE O-ring port – plugged M14 X 1.5 metric O-ring port – plugged	23,24	Auxiliary mounting output shaft	00 AA AB AC AD AE AH AJ AK	No auxiliary mounting or output shaft 2 Bolt A (SAE J744-82-2) w/ 9T 16/32DP external splined shaft 2 Bolt A (SAE J744-82-2) w/ 11T 16/32DP external splined shaft 2 Bolt B (SAE J744-101-2) w/ 13T 16/32 DP internal splined coupling 2 Bolt B (SAE J744-101-2) w/ 15T 16/32DP internal splined coupling 2 Bolt B (SAE J744-101-2) w/ 26T 32/64DP external splined shaft 2 Bolt A (SAE J744-82-2) w/ 9T 16/32DP internal splined coupling 2 Bolt A (SAE J744-82-2) w/ 11T 16/32DP internal splined coupling 2 Bolt B (SAE J744-101-2) w/ 26T 32/64DP internal splined coupling
14	Controller type	A B C D E F G H J K	Pressure compensator Pressure and flow compensator Electric dual range pressure compensator with directional control valve Hydraulic remote control pressure compensator Unloading valve (accumulator circuits) Electric dual range pressure compensator without directional control valve Adjustable pressure compensator (PVE19 and PVE21 only) Adjustable pressure and flow compensator (PVE19 and PVE21 only) Adjustable hydraulic remote control pressure compensator (PVE19 and PVE21 only) CFD control – 12 volt DC	25	Shaft seals	0 1 2	No shaft seal Standard shaft seal (fluorocarbon) Double fluorocarbon shaft seal
				26,27	Special features	00 AA AF	No special features Auxiliary mounting cover plate Cast iron housing
				28,29	Paint	00 CD	No paint Blue primer
				30	Customer and unit	0	STD – mark assembly number, model number up identification to rotation and build date code on plate
				31	Design code	A	First design

# Shaft Torque

## Data

PVE19/21

### SHAFT TORQUE DATA

Spline Data	Designation	Thru-drive Option	Maximum Input Torque N.m (lb.in.)
02	SAE "BB" straight keyed	Yes	215 (1900)
08	SAE "BB" spline 15T, 16/32 D.P., FRSF	Yes	337 (2987)
05	SAE "B" spline 13T, 16/32 D.P., FRSF	Yes	208 (1850)
01	SAE "B" straight keyed	No	135 (1200)
09	Special Eaton 26T for use in rear pump of tandem PVE**-PVE** unit	No	N/A

**Note:** See page 20 for more details.

## Typical Rear Pumps for Thru-drives PVE19/21

### TYPICAL REAR PUMPS FOR THRU-DRIVES

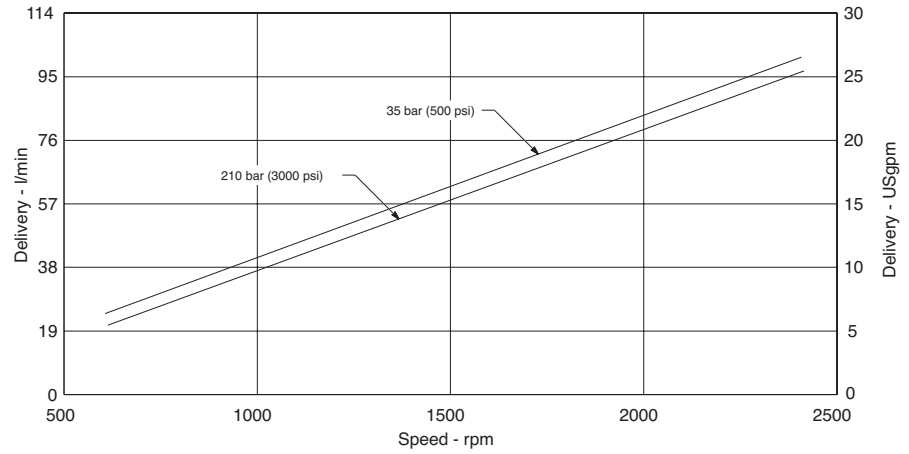
Model Code	Typical Rear Pump Model	Rear Pump Shaft Code	PVE** Thru-drive Coupling
AH	PVQ10/13	3	864224 (9T / 9T Straight)
	PVB5/6	Suffix -S214	
	V10	11	
	V20	62	
AC	PVE12	5	864307 (26T / 13T Step)
	PVE19/21	5	
	PVQ20/32	3	
	PVQ40/45	5	
	V2010 or V2020	11	
20V(Q)	151		
AD	PVE19/21	8	475134 (26T / 15T Step)
	PVQ40/45	8	
	2520V(Q)	166	
AK	PVE12	9	627168 (26T / 26T Straight)
	PVE19/21		
	N/C		
	PVQ40/45		

# Performance Curves

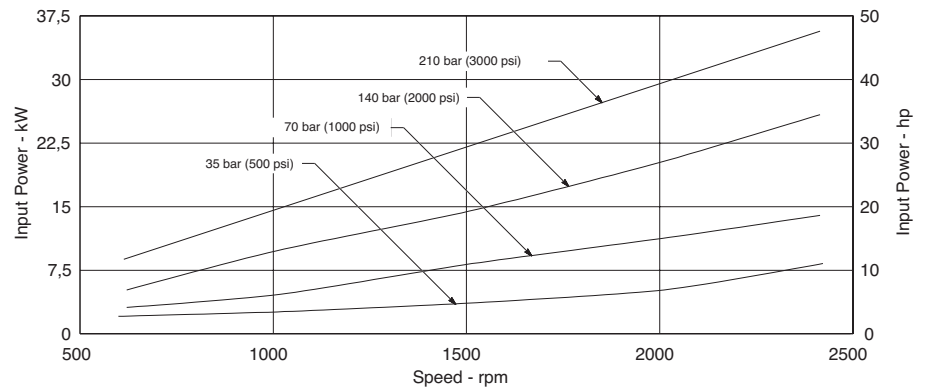
## PVE19

Oil type: SAE 10W  
 Oil temperature: 82°C (180°F)  
 Inlet pressure: 0 psi

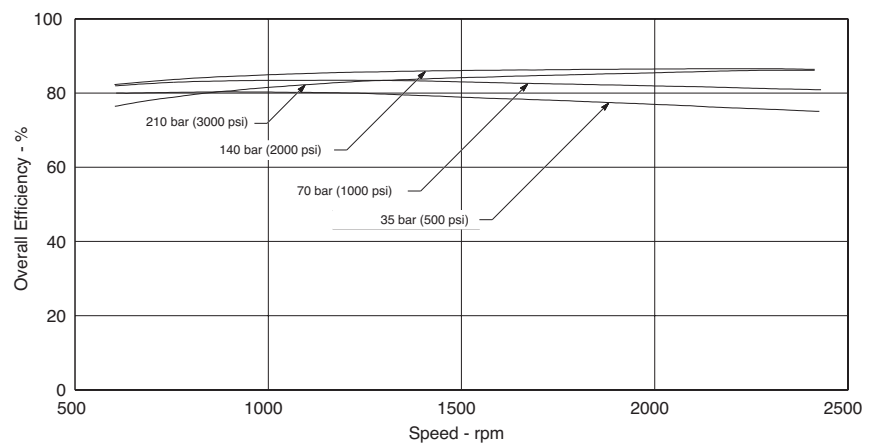
### Effective Flow Versus Speed



### Input Power Versus Speed



### Overall Efficiency Versus Speed

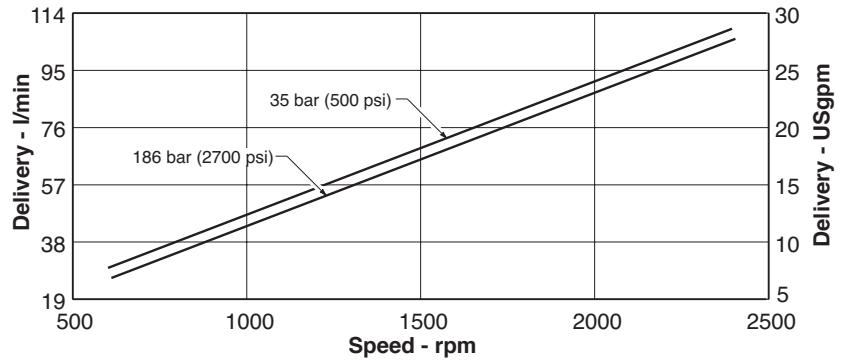


# Performance Curves

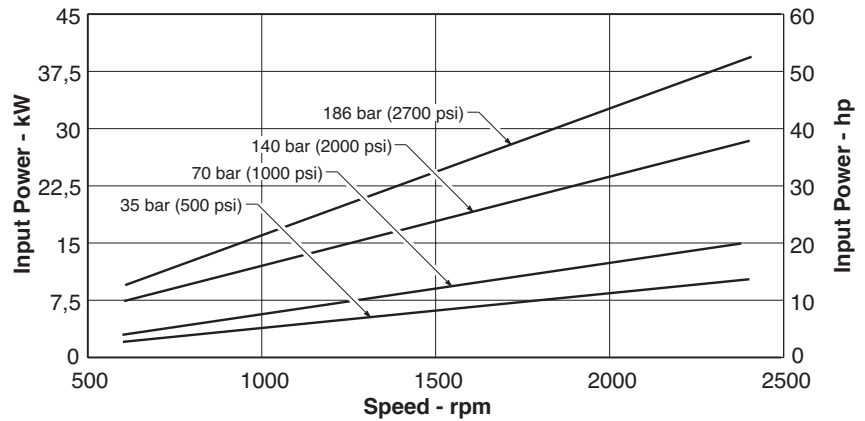
## PVE21

Oil type: SAE 10W  
 Oil temperature: 82°C (180°F)  
 Inlet pressure: 0 psi

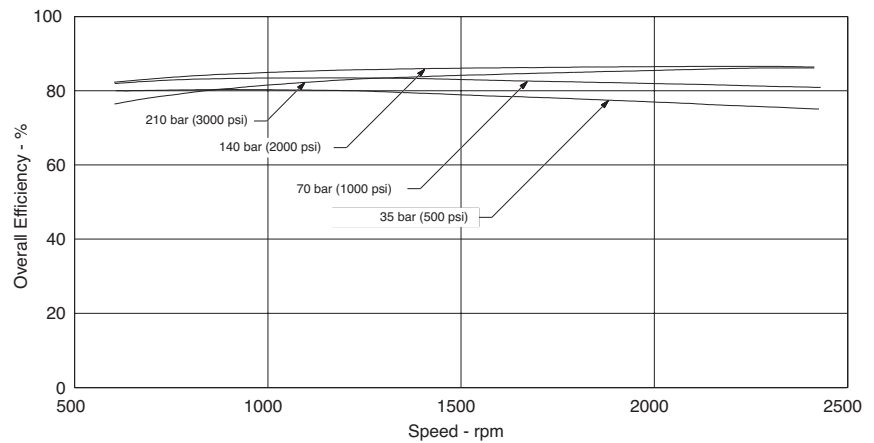
### Effective Flow Versus Speed



### Input Power Versus Speed



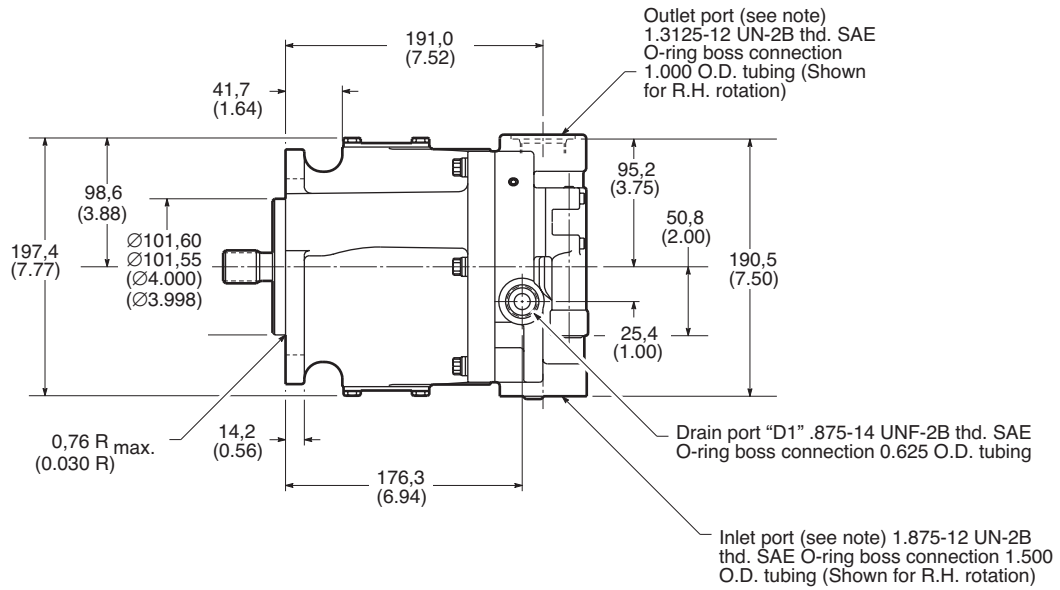
### Overall Efficiency Versus Speed



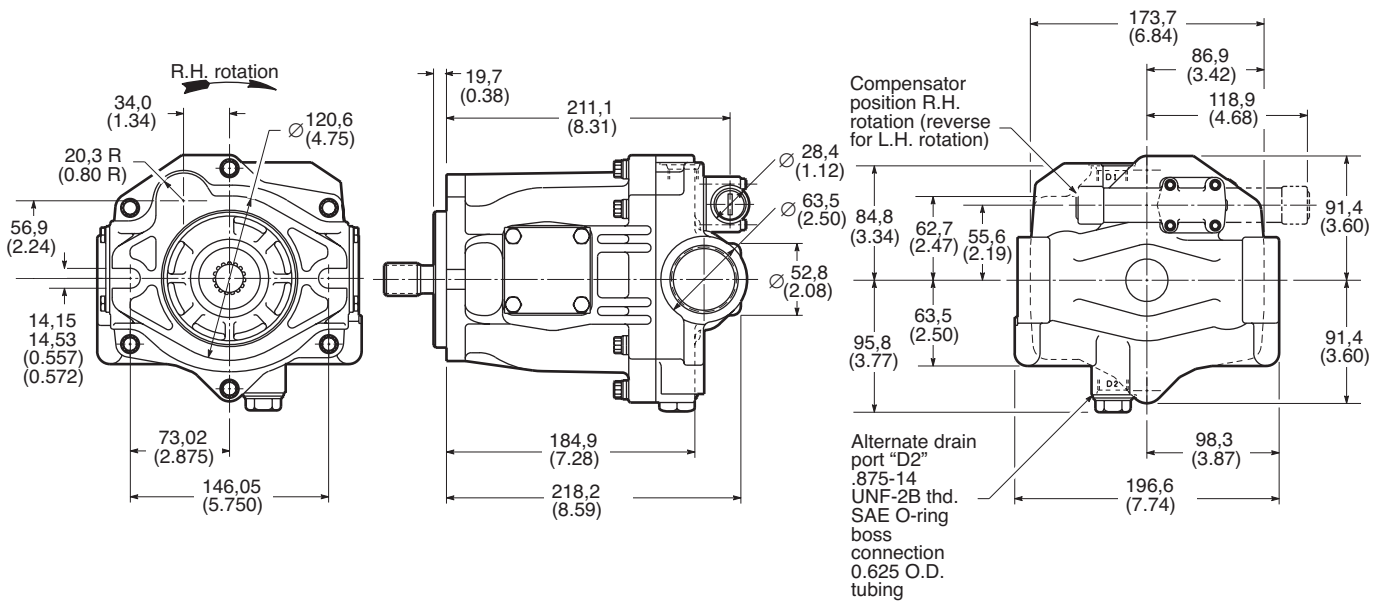
# Installation Dimensions

## PVE19/21 with Side Ports

Millimeters (inches)



**Note:** Ports are reversed for L.H. Rotation

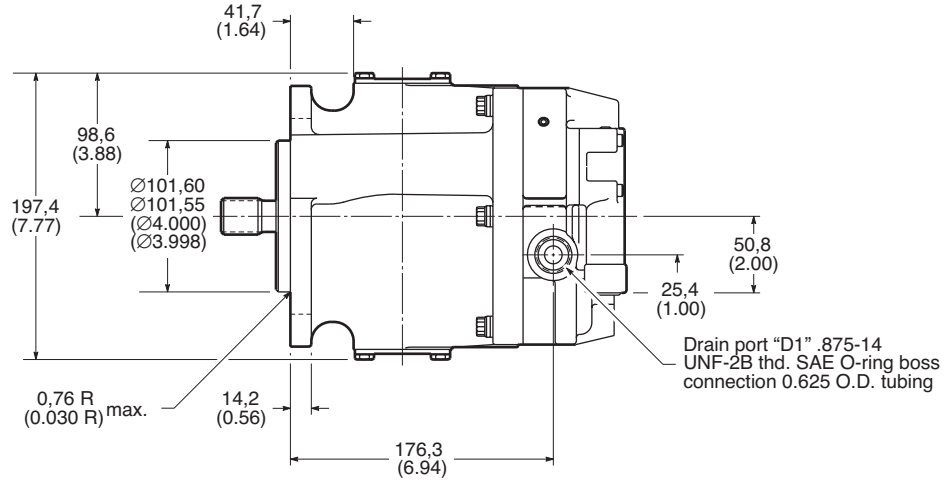




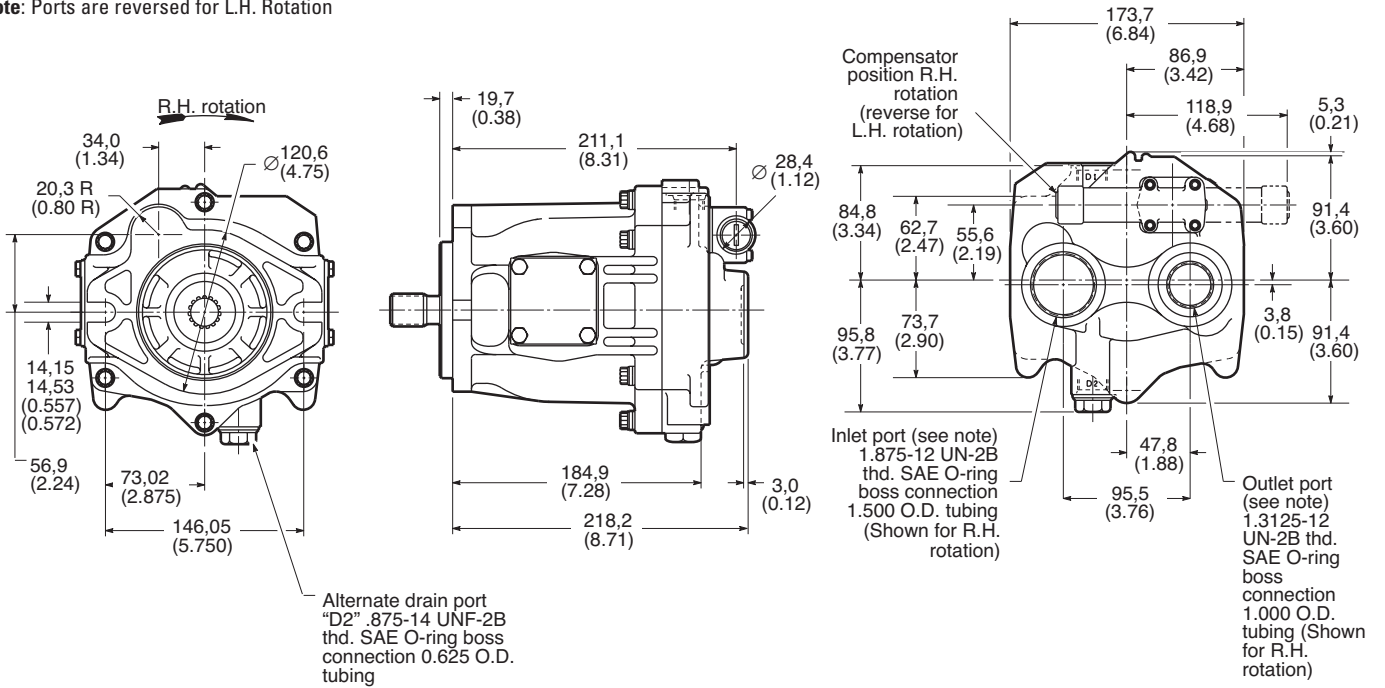
# Installation Dimensions

## PVE19/21 with End Ports

Millimeters (inches)



**Note:** Ports are reversed for L.H. Rotation



# Controls

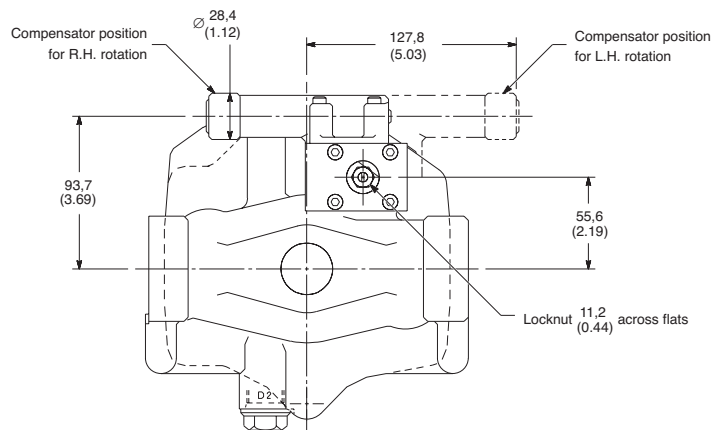
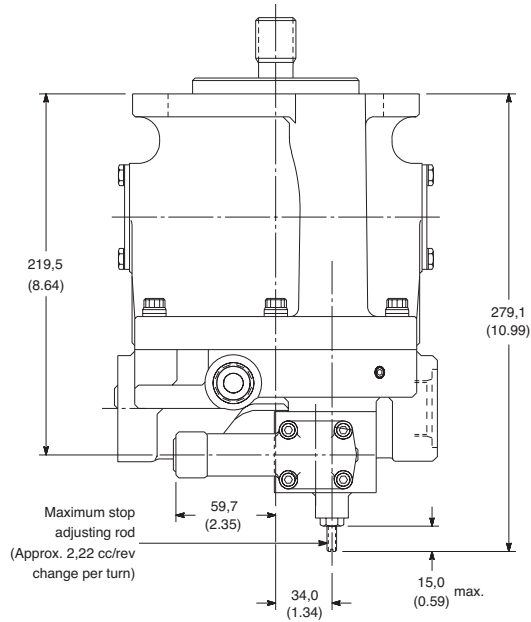
## PVE19/21

### Adjustable Maximum Displacement Stop

#### Adjustment

Loosen the locknut on the adjusting rod. Turn the adjusting rod clockwise to decrease maximum pump delivery, or counter-clockwise to increase maximum pump delivery, until the desired setting is obtained. Secure the setting by tightening the locknut. To assist initial priming, the manual adjustment control setting must be at least 40% of the maximum flow position.

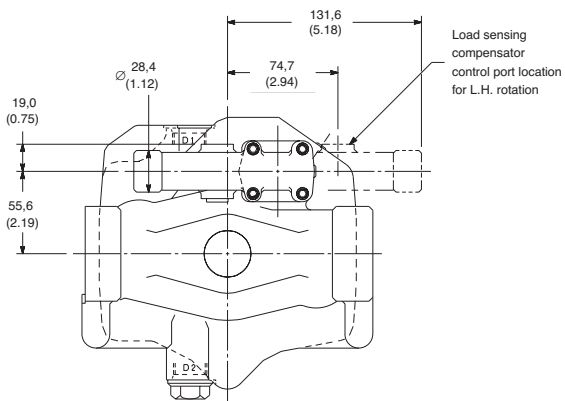
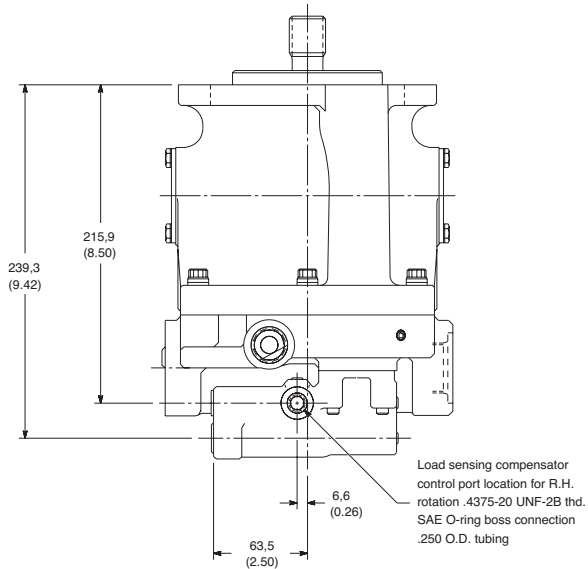
This control enables maximum pump delivery to be externally adjusted from 25% to 100% while maintaining all the standard features of a pressure compensated pump.



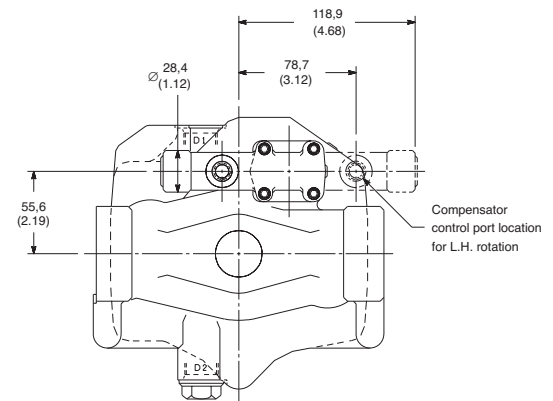
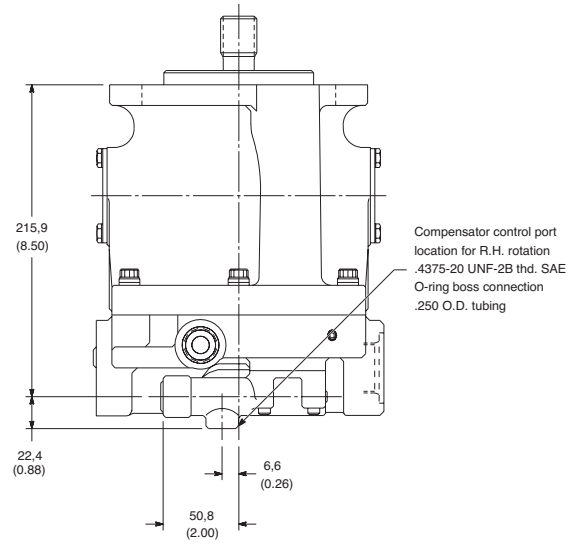
# Controls

## PVE19/21 Load Sensing with Pressure Limiter Control "B" Option

See page 16 for other details and dimensions.



## PVE19/21 Remote Adjustment Compensator Control "D" Option



# Controls

## Unloading Valve Control – “E” Option

With the unloading valve control the variable pump will unload at a preset pressure. The pump will maintain this no flow, low pressure (approximately 14 bar [200 psi]) standby condition, until system pressure drops to about 85% of the preset unloading pressure. The pump will then return on stroke and provide full flow until the preset unloading pressure is reached again.

With this control, an efficient accumulator charging circuit is obtained. The pump will provide full flow to fill the accumulator until the maximum charging pressure is reached. The pump then goes to a standby condition until the accumulator pressure drops to 85% of the desired maximum. The accumulator is then recharged as the cycle starts over again.

A separate right angle check valve must be provided to maintain the accumulator hydraulic charge and prevent back flow when the pump is unloaded. The check valve's internal leakage must not exceed five drops per minute. The control port must be connected to system pressure, downstream of the check valve.

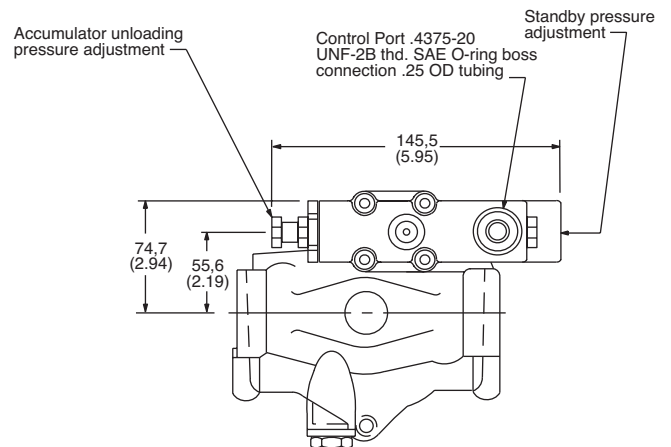
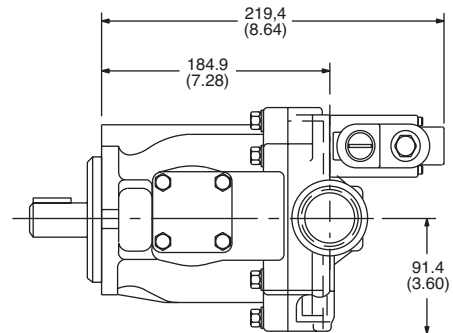
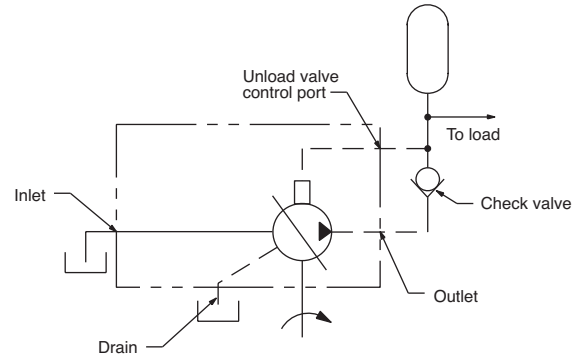
### Adjustment range

PVE19	100-210 bar (1500-3000 psi)
PVE21	100-186 bar (1500-2700 psi)

Cut-in pressure is 85% of unloading pressure, minimum.

### Setting Pressures

1. Back out accumulator unloading pressure adjustment screw to below desired unloading pressure.
2. Adjust desired standby pressure.
3. Set accumulator pressure by screwing in the accumulator unloading adjustment screw. Accumulator recharge (cut-in) pressure is a function of the maximum accumulator pressure and is not adjustable.
4. Check pressure settings and re-adjust if necessary.

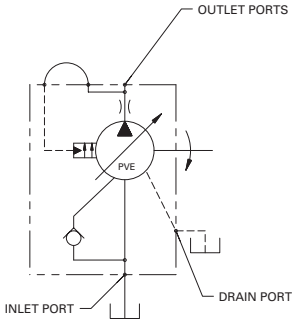


# Controls

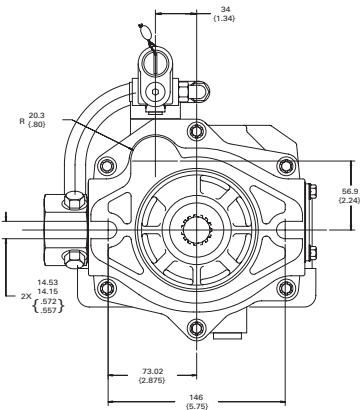
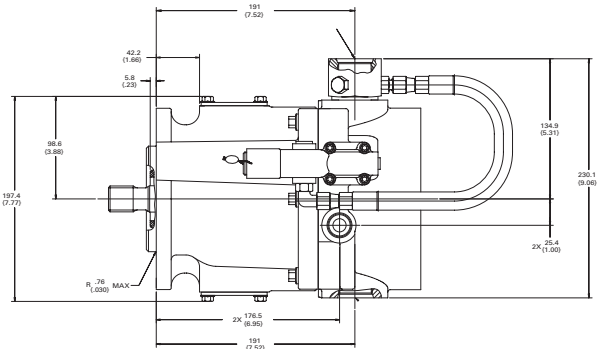
## Valves – Constant Flow Adapter

This control is designed to automatically adjust the PVE outlet flow in response to an internal pressure signal. It will adjust the pump displacement to maintain the outlet flow at a preset level regardless of Input RPM.

Contact your Eaton representative for further detail. This option will fit into the Model code under position 26, 27 - "Special features." 6, 7, 8 GPM constant flow settings available.



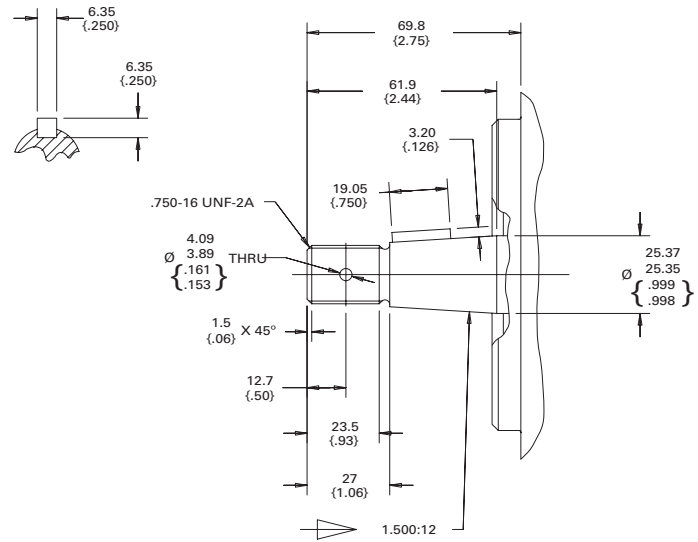
CIRCUIT DIAGRAM



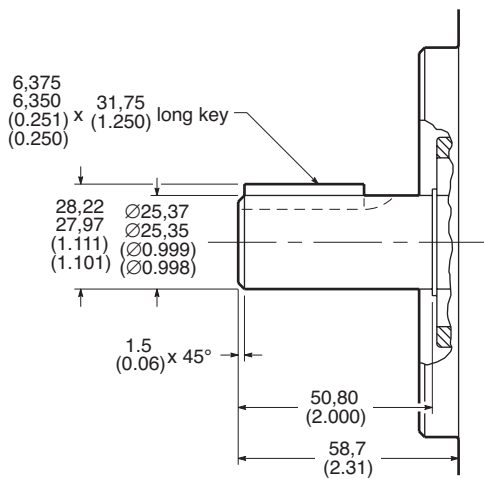
# Shaft Options

## PVE19/21

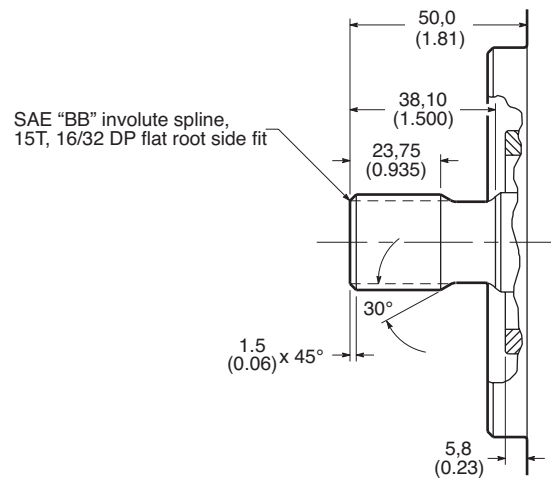
### No. 04 Shaft: Tapered Key shaft



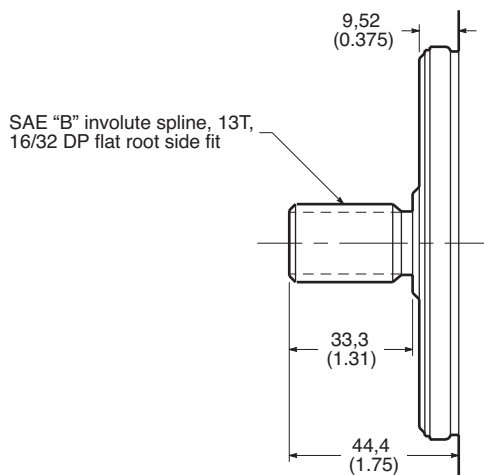
### No. 02 Shaft: SAE "BB" Straight Keyed



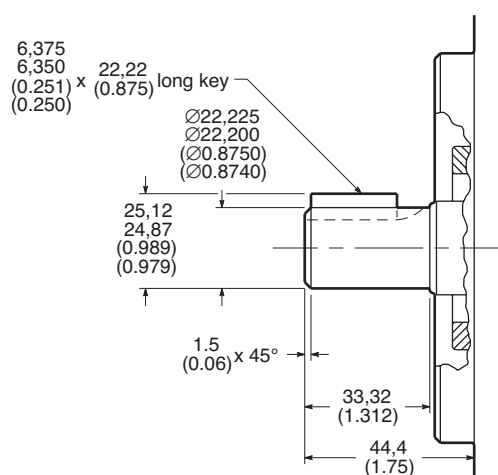
### No. 08 Shaft: SAE "BB" Splined



### No. 05 Shaft: SAE "B" Splined



### No. 01 Shaft: SAE "B" Straight Keyed



# Thru-drives

## PVE19/21

### SAE "A"

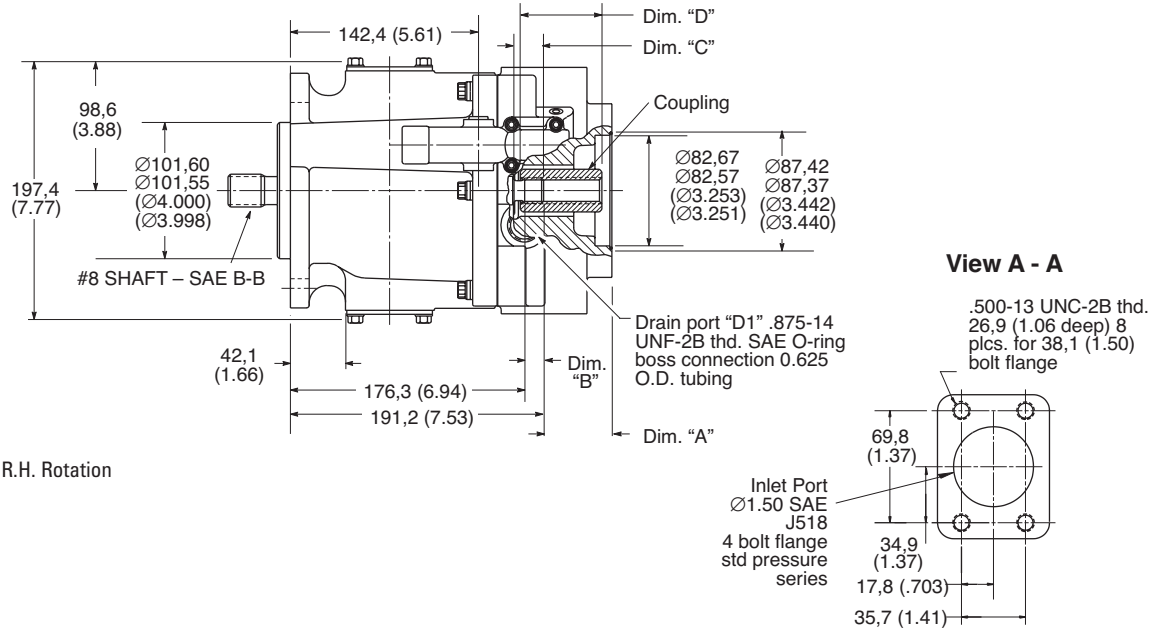
## Thru-drives

Millimeters (inches)

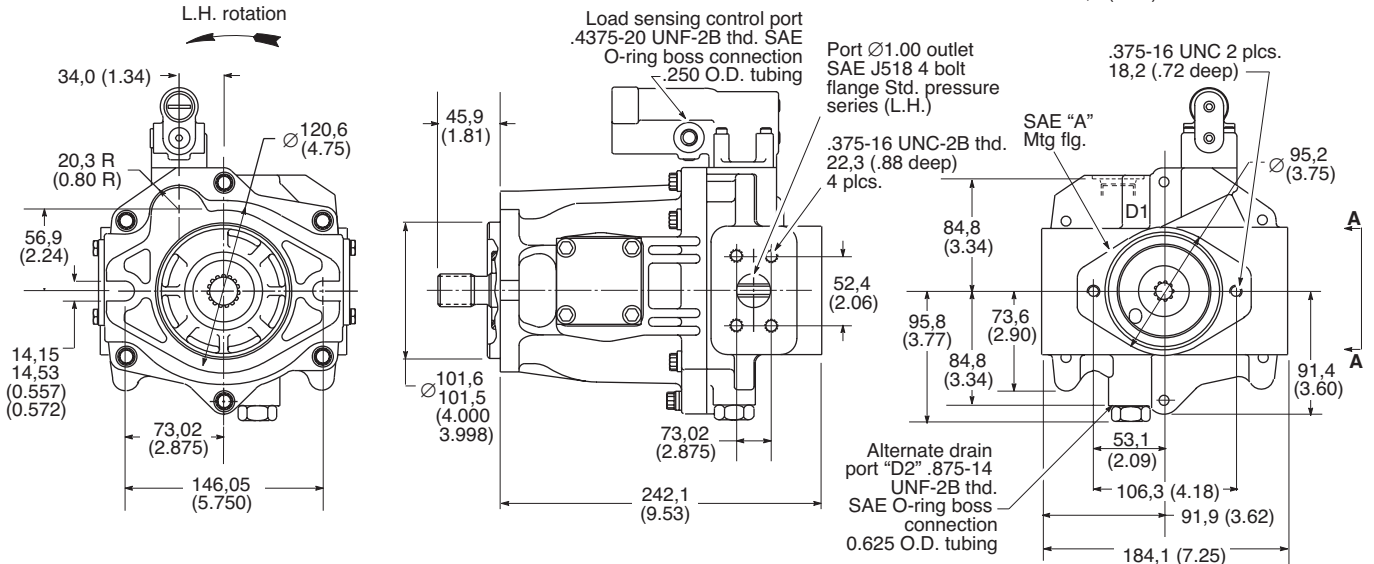
#### PVE 19/21 SAE "A" THRU-DRIVES

Thru-shaft	Spline Data	DIM. "A" mm (in.)	DIM. "B" mm (in.)	DIM. "C" mm (in.)	Max Torque Rating N.m (In. lbs.)	Coupling Length Dim "D" mm (in.)
AA	9 teeth 16/32DP Flat Root Side Fit	50,8 (2.00)	12,7 (0.50)	22,6 (0.89)	58 (517)	864224 62,7 (2.47) 62,2 (2.45)
AB	11 teeth 16/32DP Flat Root Side Fit	50,8 (2.00)	14,5 (0.57)	22,6 (0.89)	123 (1100)	864325 60,9 (2.40) 60,7 (2.39)

**Note:** Couplings, screws and washers must be ordered separately to mount rear pump. "A" O-ring (AS568-042) is included with each thru-drive pump.



**Note:** Ports are reversed for R.H. Rotation



# Thru-drives PVE 19/21 SAE "B" Thru-drives

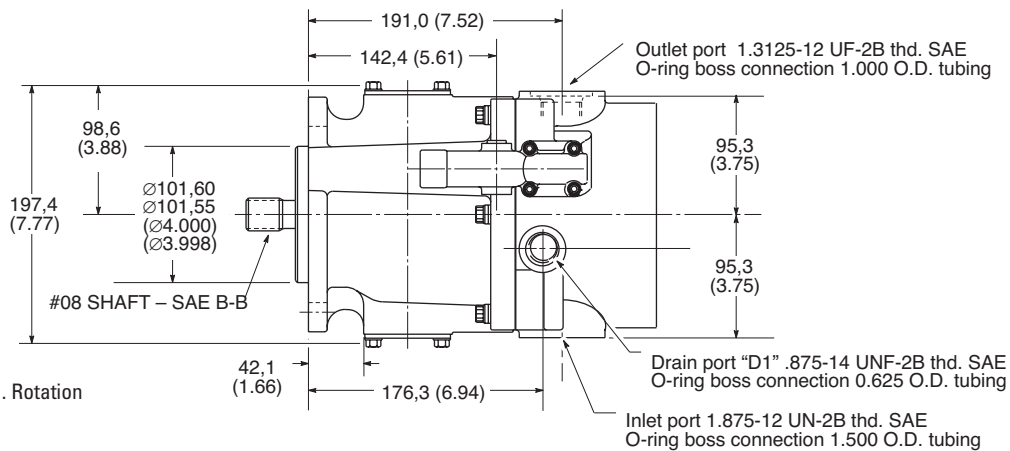
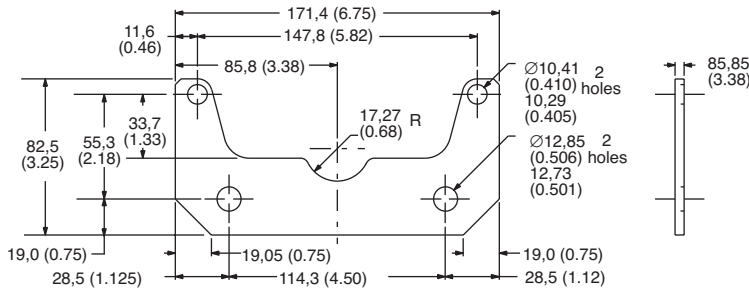
Millimeters (inches)

## Thru-drive Pump Support Bracket

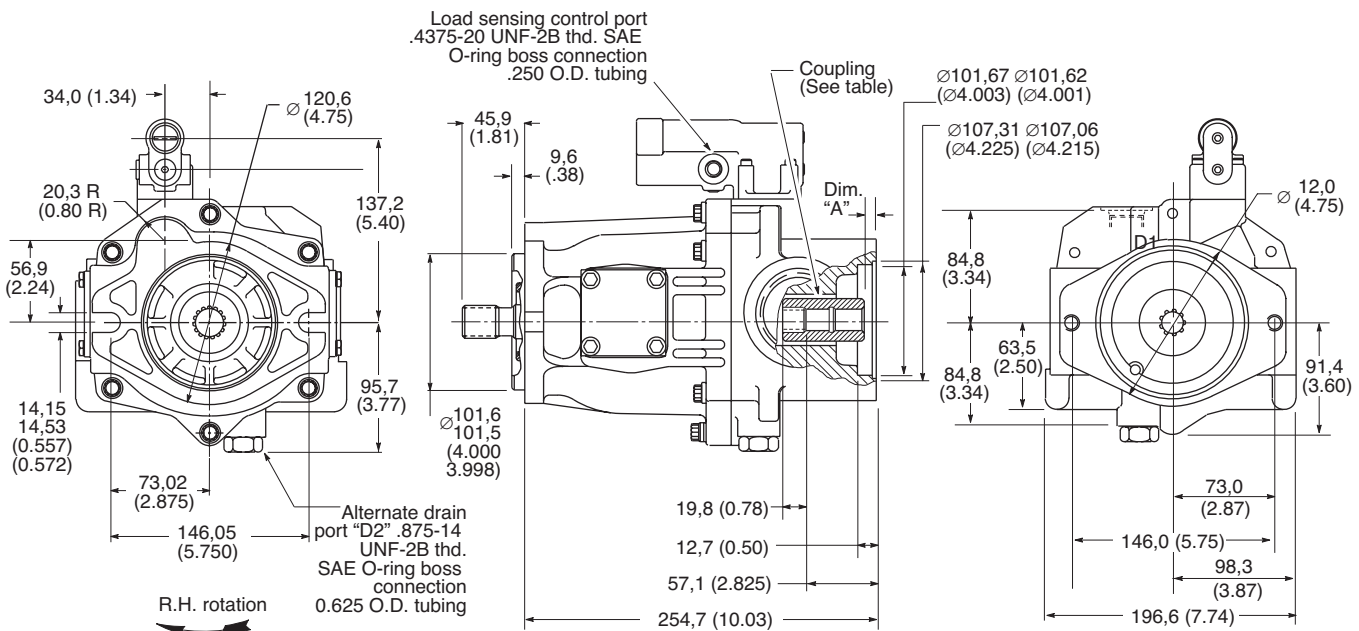
An optional support bracket should be used when a heavy second pump is mounted to a thru-drive PVE19/21. The support bracket (627179), two screws (199740), and two washers (427700) must be ordered separately.

Thru-shaft	Spline Data	Max. Torque Rating N.m (In. lbs.)	Dim. "A" mm (in.)	Coupling
AE	Special Eaton 26 teeth 32/64DP Flat Root Side Fit	179 (1587)	10,9 (0.43)	864307 26T/13T
			20,6 (0.81)	475134 26T/15T
			24,9 (0.98)	627168 26T/26T

**Note:** Couplings, screws and washers must be ordered separately to mount rear pump.  
"A" O-ring (AS568-155) is included with each thru-drive pump.



**Note:** Ports are reversed for L.H. Rotation





# Model Number System

## PVE4\*-25V

**EXAMPLE MODEL NUMBER SYSTEM:** (F3) PVE 41 25V 40 R I 1 S A 30 C21\*\*\*\*\* \* 1\*  
 (Position) 1 2 3 4 5 6 7 8 9 10 11 12 13 14

Nos	Feature	Code	Description	Nos	Feature	Code	Description
1	Seals	F3 Blank	Viton® (optional) Buna N (standard)	11	Pump design	30	30 series Subject to change. Installation dimensions remain the same for design numbers *0 to *9 inclusive.
2	Model series	PVE	Piston pump, variable, E series	12	Control options	C**	Pressure compensator. For PVE41: Adjustable from 20-210 bar (300-3000 psi). Standard setting "C21" indicates 207 bar (3000 psi). For PVE45: Adjustable from 20-186 bar (300-2700 psi). Standard setting "C19" indicates 186 bar (2700 psi). (standard)
3	Piston pump frame size (shaft end pump)	41 45	41 cm3/r (2.50 in 3/r) (PVE19 rotating group) 45 cm3/r (2.75 in3/r) (PVE21 rotating group)				Remote adjustment pressure compensator (optional)
4	Vane pump series (cover end pump)	25V	High performance, fixed displacement, intra-vane pump				Load sensing with "C" type pressure limiter. Load sense set at 11 bar (160 psi). (standard)
5	Vane pump displacement	40 45 55 67	40 cm3/r (2.44 in3/r) 45 cm3/r (2.75 in3/r) 55 cm3/r (3.36 in3/r) 67 cm3/r (4.09 in3/r)				Load sense with "C" type pressure limiter. Load sense set at 24 bar (350 psi). (optional)
6	Rotation (viewed from shaft end)	R L	Right hand Left hand				**Indicates pressure compensator setting in tens of bar.
7	Rotating group type	I M	Quieted (1800 rpm) Mobile (2400 rpm)	13	Control bleed down (CVP and CVPC models only)	B P	Bleed down orifice (0.015" dia.) in load sense control (standard) Plug, no bleed down orifice in load sense control (optional)
8	Shaft type [torque limitation]	1 2 9	SAE "BB" straight keyed [215 Nm (1900 in. lbs.)] SAE "BB" splined [337 Nm (2987 in. lbs.)] SAE "B" splined [208 Nm (1850 in. lbs.)] see chart below	14	Control design	10 12	C and CG CFP and CVPC
9	Ports (SAE 4 bolt flange)	S M	Inch threads (standard) Metric threads (optional)			Blank	Omit for C and CG models
10	Cover orientation (vane pump outlet)	A B C D	Outlet opposite inlet (standard) Outlet 90° CCW from inlet (optional) Outlet inline with inlet (standard) Outlet 90° CW from inlet (optional)				

## Shaft Torque Data

### PVE4\*-25V

#### PVE4\*-25V SHAFT TORQUE DATA

Input Shaft	Designation	Thru-drive Option	Maximum Input Torque N.m (lb.in.)
1	SAE "BB" straight keyed	No	215 (1900)
2	SAE "BB" spline 15T, 16/32DP, FRSF	No	337 (2987)
9	SAE "B" spline 13T, 16/32DP, FRSF	No	208 (1850)

# Performance Curves

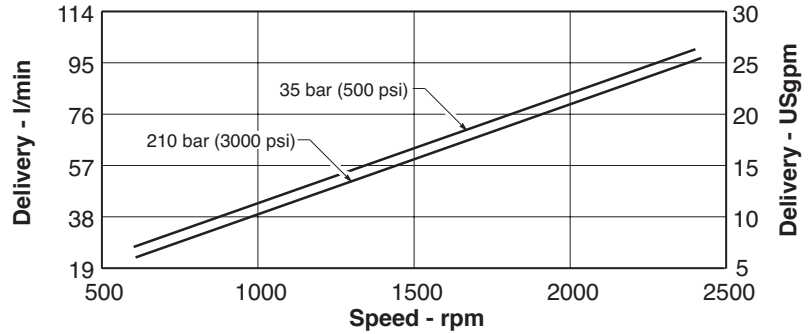
## PVE4\*-25V

### Integrated Pumps

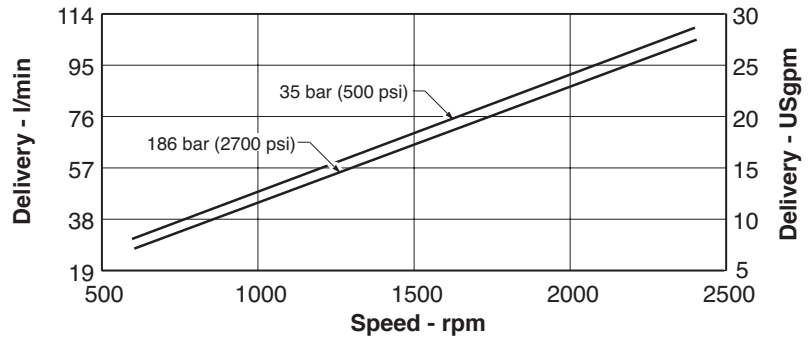
Oil type: SAE 10W  
 Oil temperature: 82°C (180°F)  
 Inlet pressure: 0 psi

#### Effective Flow Versus Speed

PVE41 Piston Pump Section



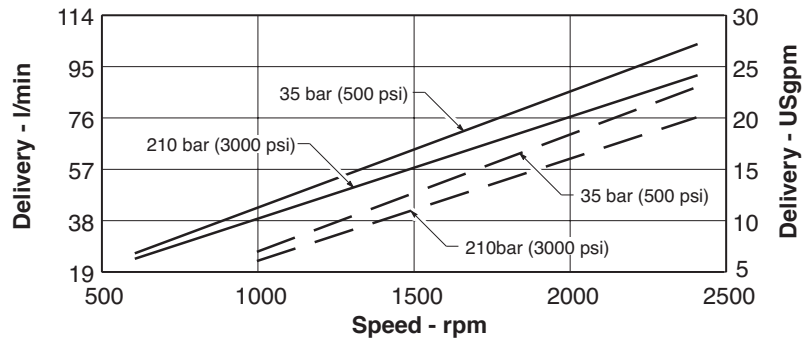
#### PVE45 Piston Pump Section



#### PVE4\*-25V Vane Pump Section

(45 and 40 Displacement)

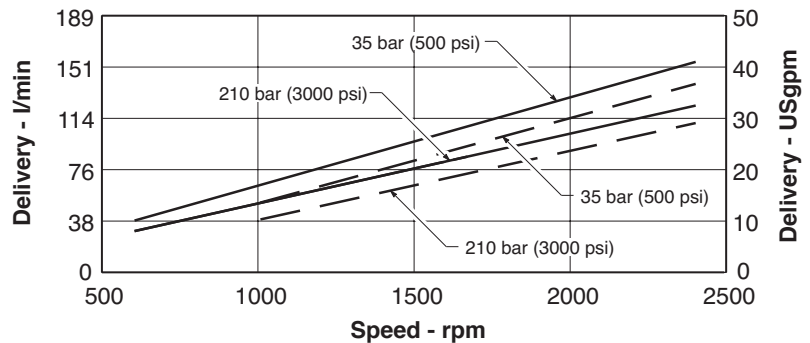
PVE4\*-25V45 ———  
 PVE4\*-25V40 - - - -



#### PVE4\*-25V Vane Pump Section

(67 and 56 Displacement)

PVE4\*-25V67 ———  
 PVE4\*-25V56 - - - -



# Performance Curves

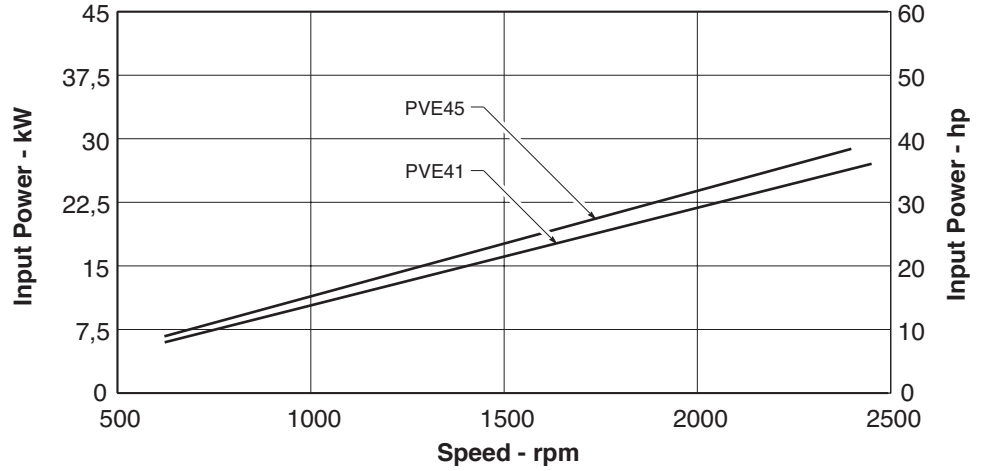
## PVE4\*-25V Integrated Pumps (continued)

Oil type: SAE 10W  
 Oil temperature: 82°C (180°F)  
 Inlet pressure: 0 psi

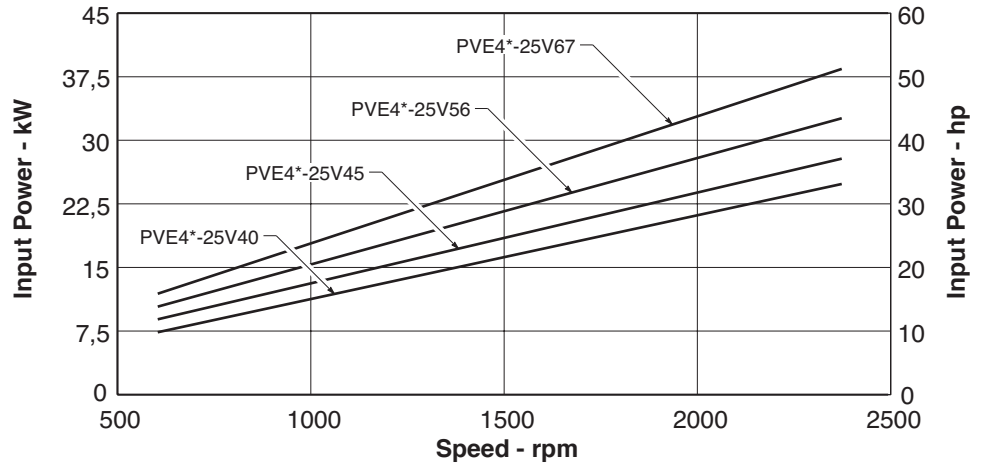
### Input Power Versus Speed at 140 bar (2000 psi)

(Input power is proportional  
to pressure.)

#### PVE4\* Piston Pump Section



#### PVE4\*-25V Vane Pump Section



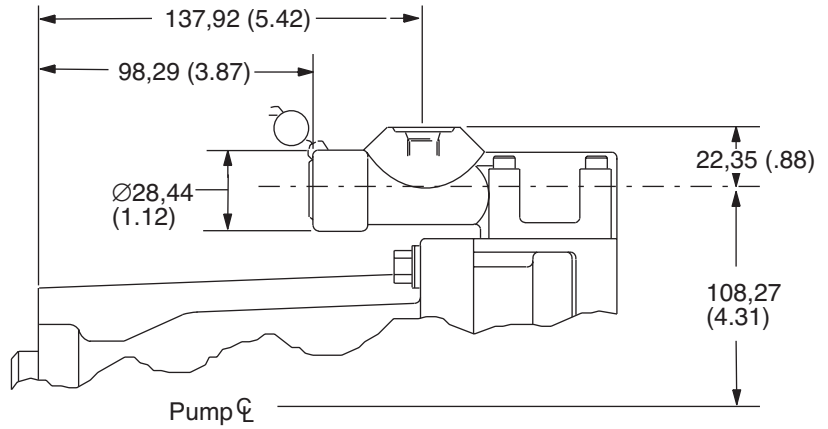
# Controls

## PVE4\*-25V

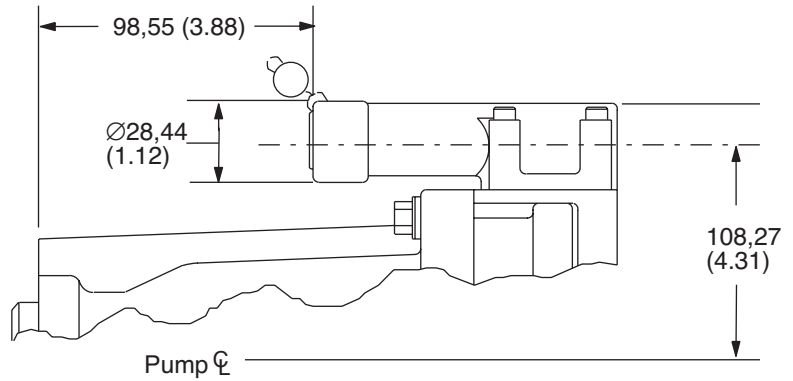
### Controls

Millimeters (inches)

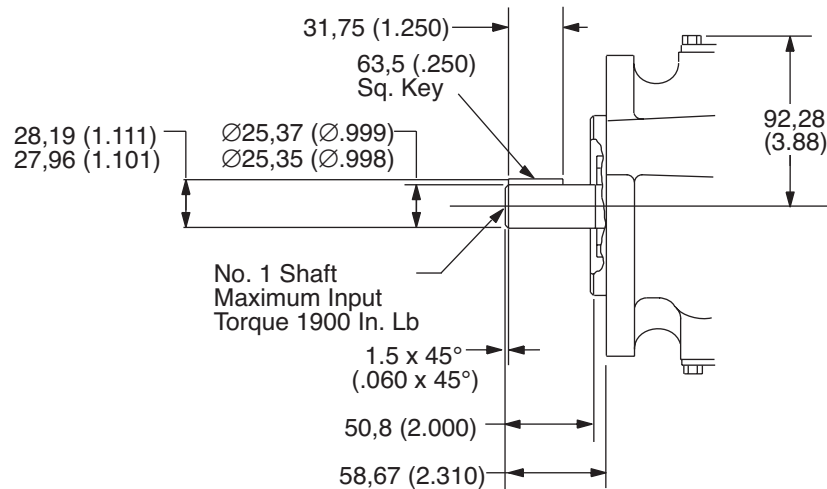
#### "CG" Remote Adj. Compensator



#### "C" Compensator



#### PVE4\*-25V No. 1 Shaft (BB Straight key)

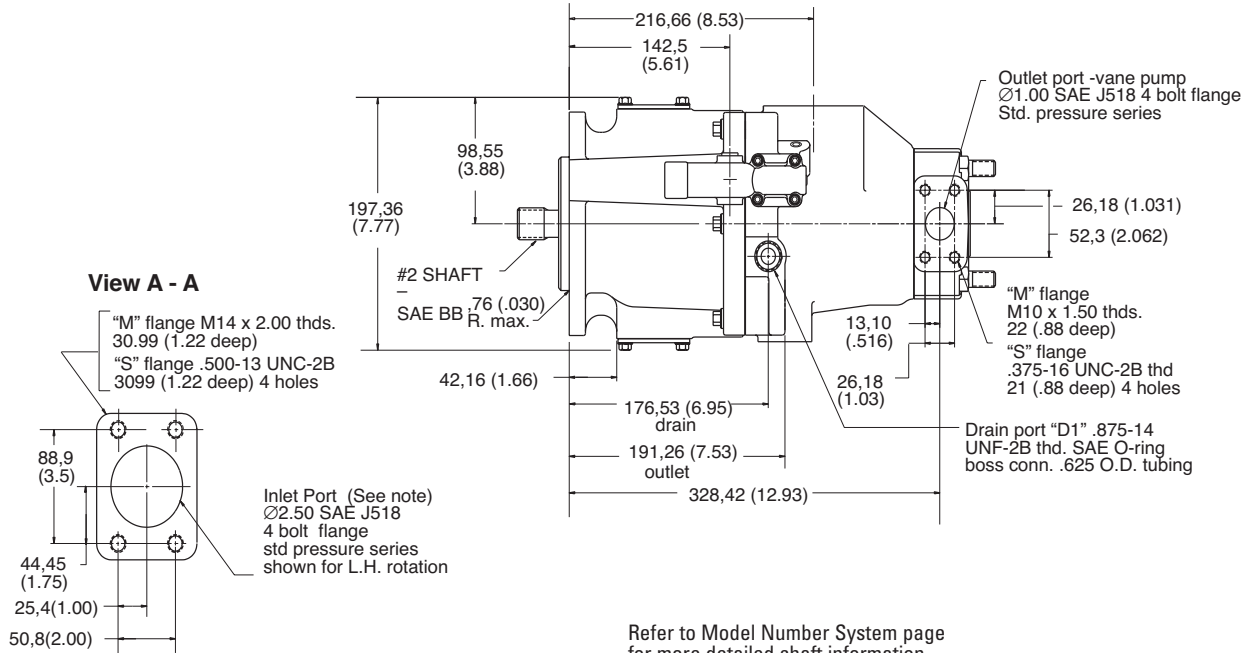


# Installation Dimensions

## PVE4\*-25V

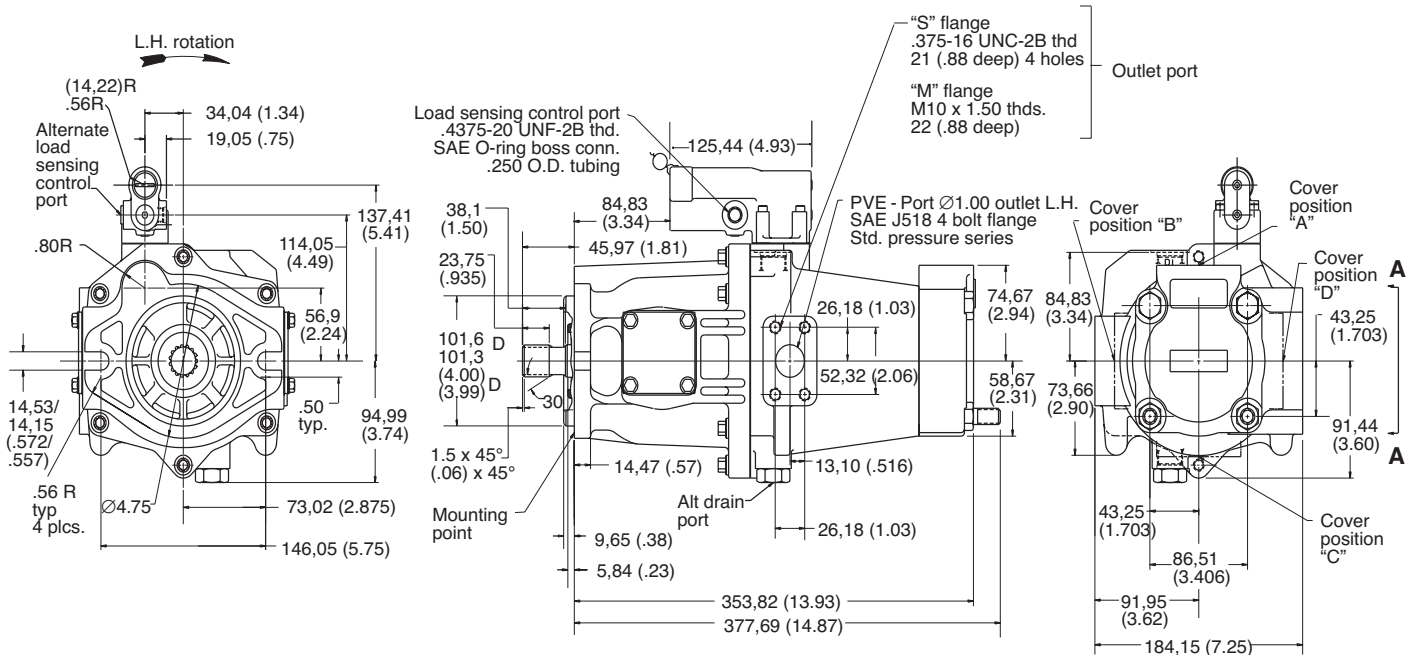
### Integrated Pump

Millimeters (Inches)



Refer to Model Number System page for more detailed shaft information.

Note: Ports are reversed for R.H. Rotation



# Application Data

## Fluid Cleanliness

Proper fluid condition is essential for long and satisfactory life of hydraulic components and systems. Hydraulic fluid must have the correct balance of cleanliness, materials, and additives for protection against wear of components, elevated viscosity, and inclusion of air.

Essential information on the correct methods for treating hydraulic fluid is included in

Eaton publication 561 "Eaton Guide to Systemic Contamination Control" available from your local Eaton distributor or by contacting Eaton Hydraulics. Recommendations on filtration and the selection of products to control fluid condition are included in 561.

Recommended cleanliness levels, using petroleum oil under common conditions, are based

on the highest fluid pressure levels in the system and are coded in the chart below. Fluids other than petroleum, severe service cycles, or temperature extremes are cause for adjustment of these cleanliness codes. See Eaton publication 561 for exact details.

Eaton products, as any components, will operate with apparent satisfaction in fluids

with higher cleanliness codes than those described. Other manufacturers will often recommend levels above those specified. Experience has shown, however, that life of any hydraulic component is shortened in fluids with higher cleanliness codes than those listed below. These codes have been proven to provide a long, trouble-free service life for the products shown, regardless of the manufacturer.

Product	System Pressure Level bar (psi)		
	<70 (<1000)	70-210 (1000-3000)	210+ (3000+)
Piston Pumps – Variable	18/16/14	17/15/13	16/14/12

## Fire resistant fluids

Water glycol, phosphate ester and polyol ester fluids may be used with PVE pumps. With the PVE12 and 19, system pressure and input speed should not exceed 140 bar (2000 psi) and 1800 r/min.

With the PVE41-25V, system pressure and input speed should not exceed 140 bar (2000 psi) and 1200 r/min (1800 r/min for water glycol). System temperature should not exceed 54°C (130°F). Inlet vacuum should not exceed 101,6 millibar (3 in. Hg.).

## Hydraulic fluids and temperature ranges

Use antiwear hydraulic oil, or automotive type crankcase oil designations SC, SD, SE or SF per SAE J183FEB80.

Select a viscosity grade that will allow optimum viscosity, between 40 cSt (180 SUS) and 16 cSt (80 SUS), to be achieved within the optimum performance envelope shown.

For further information, see Eaton Hydraulic Hints and Trouble Shooting Guide.

## Ordering procedure

Order PVE pumps by the full model designation. Pump displacement, mounting flange type, direction of rotation, pump configuration, shaft end type, seals, pressure adjustment range, specific control functions are all specified in the full model code.

**Eaton**  
14615 Lone Oak Road  
Eden Prairie, MN 55344  
USA  
Telephone: 952 937-9800  
Fax: 952 974-7130  
www.eatonhydraulics.com

46 New Lane, Havant  
Hampshire P09 2NB  
England  
Telephone: (44) 23 92 486 451  
Fax: (44) 23 92 487 110



**Quality System Certified**  
Products in this publication are manufactured in an ISO-9001-certified site.

**EAT•N**

**Vickers™**

© 2001 Eaton Corporation  
All Rights Reserved  
Printed in USA  
Form No. 11-06-0615  
EN-0801  
December, 2001