



# FEEDER BLOCK SERIES AGG6F

Fixed Discharge 12 cc. per/stroke  
(.732 cu. in./stroke) Dual Line System

626180 627180  
628180 629180  
626140 627140  
628140 629140

ENGLISH

## PRODUCT DATA SHEET

### DESCRIPTION:

The feeder body is made of special anti-friction steel. Pistons are made of tempered steel. Bores and pistons are lapped to provide superior sealing. These feeders do not employ indicator turrets (see AGG6 series) and are used for special applications. The body has a galvanized finish and features an adaptor for single or double outlet conversion. They are set by the factory at 12 cc./stroke (.732 cu. in./stroke) unless otherwise requested.

### SPECIFICATION:

- Temperature range:** -30 - +80°C.
- Max. pressure (inlet):** 400 bar (5800 psi.)
- Cycles:** 100/min.
- Min. Viscosity:** 100 cSt (462 SSU)
- Grease Max.:** 265 ASTM (NLGI 2)\*

(\* For different type of grease please contact your supplier

### Connections:

- Inlet:** 3/8"
- Outlet:** 3/8"

### ORDERING INFORMATION:

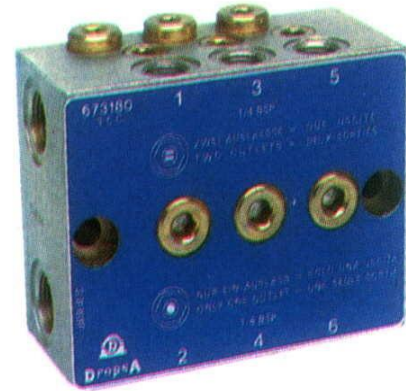
Ordering is by Part No., refer to the following table:

Thread.	Part No.	Weight.		No. Outlets.
		Kg.	Lbs.	
Dropsa Standard BSP	626180	4,470	9.83	1-2
	627180	6,390	14.06	2-4
	628180	8,810	19.39	3-6
	629180	10,880	23.94	4-8
NPTF	626140	4,470	9.83	1-2
	627140	6,390	14.06	2-4
	628140	8,810	19.39	3-6
	629140	10,880	23.94	4-8

### INSTALLATION/OPERATION:

Function:(Refer to Figs. 1 and 3.)The feeder discharge is controlled by a servo-piston (A) and metering piston (B) and can be arranged to provide a single or double outlet. Fig.D-E = 2 separate outlets Fig. F-G = 1 outlet. Feeders are normally supplied with double outlets unless otherwise specified. Retrospective conversion can be undertaken by fitting adaptor Y (Part No. 626210) for single outlet and X (Part No. 626209) for double outlet (see following page). When single outlet feeders are used the discharge per complete cycle = 24 cc./stroke (1.464 cu. in./stroke).]

**Dimensions: (Refer to Fig. 2.)**



### Mounting: (Refer to Fig. 2.)

Aluminium bushings (Part No.3008107) are supplied for mounting on uneven surfaces to prevent distortion or damage due to overtightening

### FUNCTION

#### 2 OUTLETS

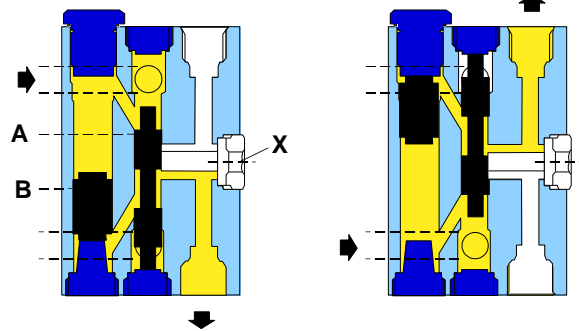


FIG. D.

FIG. E.

#### 1 OUTLET

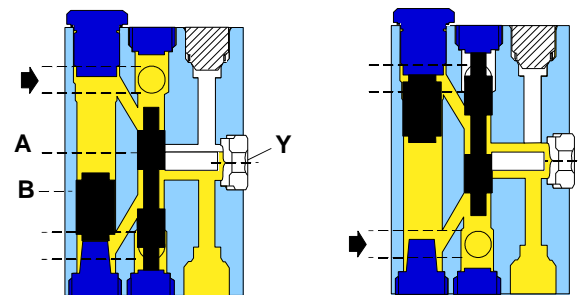
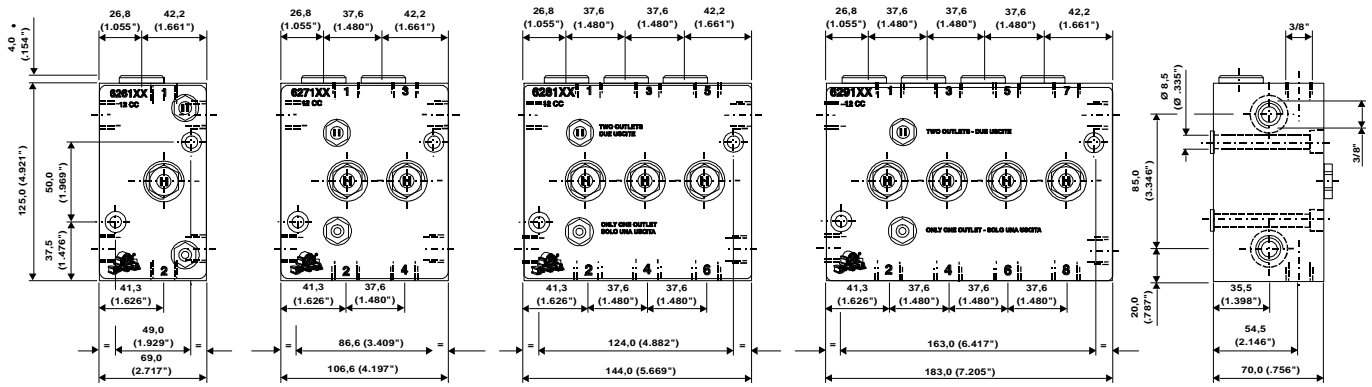


FIG. F.

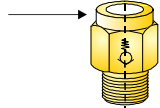
FIG. G.



Dropsa Standard feeder blocks are normally supplied with outlets having a conical seating for Ø10 mm. (3/8") tube.  
This is simple and cost effective as no fitting is required.

If required a check-valve Part No. 92326 BSP or Part No. 92359 NPTF can be fitted at the outlet. Order separately.

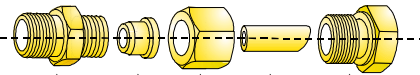
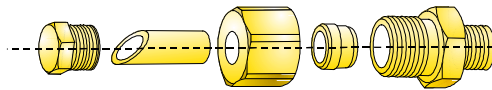
3/8" BSP  
3/8" NPTF



DROPSA STANDARD Ø mm.			
Cone	Bush	Ø Tube	Plug
93010	92010	Ø 10	91003

INLET 3/8"

OUTLET 3/8"

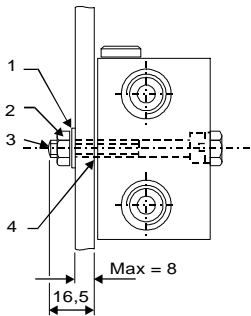


DROPSA STANDARD BSP Ø mm.				
Plug	Tube Ø	Nut	Ring	Fitting
926002	Ø 10	91406	91601	92269
	Ø 12	91411	91607	92240
	Ø 16	91416	91612	92241
NPTF DRY SEAL Ø INCHES				
850282	Ø 3/8	850202	850222	850255
	Ø 1/2	850203	850223	850257
	Ø 5/8	850204	850224	850259

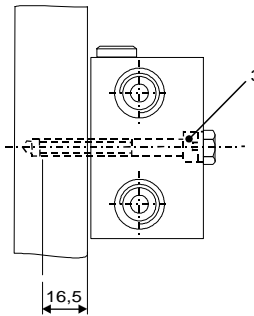
NPTF DRY SEAL Ø INCHES				
850253	850221	850201	Ø 5/16	850282
850255	850222	850202	Ø 3/8	
850257	850223	850203	Ø 1/2	

\*The double outlet adaptor (626209) is identifiable by two parallel line markings in the center; the single outlet adaptor (626210) has a circular marking only.

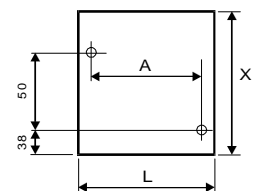
The fixing parts which are indicated thus • are to be ordered separately.



Pos.	Part No.	Qty.	Description	
• 1	16012	2	Spring washer	Metric
• 2	16406	2	Nut M8 - Hex	
• 3	12556	2	Screw M8 x 80	
• 4	3008107	2	Bushing	
• 1	16012	2	Spring washer	Inch
• 2	16500	2	Nut 5/16-24 UNF	
• 3	12560	2	Screw 5/16-24 UNF x 3-1/4	
• 4	3008107	2	Bushing	



WELD PLATES FOR FEEDERS



Pos.	Part No.	Dimensions (inches)		
		A	L	X
1	111576	49 (1.929")	70 (2.755")	190 (7.480")
2	111577	86 (3.385")	110 (4.330")	190 (7.480")
3	111578	124 (4.881")	150 (5.905")	190 (7.480")
4	111579	163 (6.417")	183 (7.204")	190 (7.480")

**ITALIA**  
Dropsa SpA  
t. +39 02-250791  
f. +39 02-25079767

**U.K.**  
Dropsa (UK) Ltd  
t. +44 (0)1784-431177  
f. +44 (0)1784-438598

**GERMANY**  
Dropsa GmbH  
t. +49 (0)211-394-011  
f. +49 (0)211-394-013

**FRANCE**  
Dropsa Ame  
t. +33 (0)1-3993-0033  
f. +33 (0)1-3986-2636

**CHINA**  
Dropsa Lubrication Systems  
(Shanghai) Co., Ltd  
t. +86 (021) 67740275  
f. +86 (021) 67740205

**U.S.A.**  
Dropsa USA Incorporated  
t. +1 586-566-1540  
f. +1 586-566-1541

**AUSTRALIA**  
Dropsa Australia Pty  
t. +61 (02)-9938-6644  
f. +61 (02)-9938-6611

**BRAZIL**  
Dropsa Do Brasil Ind.e  
Com.Ltda  
t. +55 (0)11-563-10007  
f. +55 (0)11-563-19408