



FEEDER BLOCK SERIES AGG6

Adjustable discharge 1.5 -12 cc. per stroke
 (.091 - .732 cu. in./ stroke) Dual Line System

626200 627200
 628200 629200
 626230 627230
 628230

ENGLISH

PRODUCT DATA SHEET

DESCRIPTION:

The feeder body is made of special anti-friction steel. Pistons are made of tempered steel. Bores and pistons are lapped to provide superior sealing. The indicator turrets are provided with integral adjusting screws together with a metacrylate cover and seal. On request an aluminium cover can be supplied. The feeder body has a galvanized finish and features an adaptor for single or double outlet conversion.

SPECIFICATION:

Temperature range: -30 - +80°C.
 Max. pressure (inlet): 400 bar (5800 psi.)
 Cycles: 100/min.
 Min. Viscosity: 100 cSt (462 SSU)
 Grease Max.: 265 ASTM (NLGI 2)*

(*) For different type of grease please contact your supplier

Connections:

Inlet: 3/8"
 Outlet: 3/8"

ORDERING INFORMATION:

Ordering is by Part No., refer to the following table:

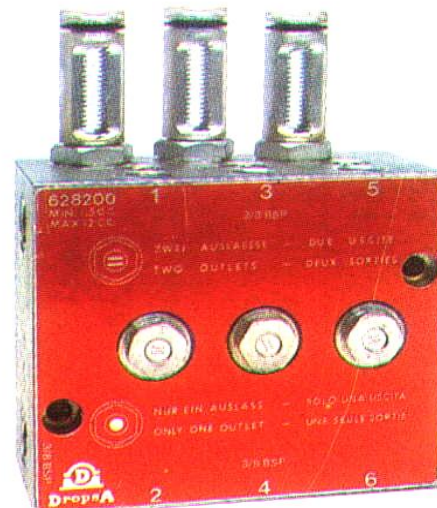
Thread	Part No.	Weight.		No. Outlets.
		Kg.	Lbs.	
DropSA Standard BSP	626200	4,600	10.12	1 - 2
	627200	6,650	14.63	2 - 4
	628200	9,200	20.24	3 - 6
	629200	11,400	25.08	4 - 8
NPTF	626230	4,600	10.12	1 - 2
	627230	6,650	14.63	2 - 4
	628230	9,200	20.24	3 - 6
	629230	11,400	25.08	4 - 8

INSTALLATION/OPERATION:

Function:(Refer to Figs. 1 and 3.)The feeder discharge is controlled by a servo-piston (A) and metering piston (B) and can be arranged to provide a single or double outlet. Fig. D-E = 2 separate outlets Fig. F-G = 1 outlet. Feeders are normally supplied with double outlets unless otherwise specified. Retrospective conversion can be undertaken by fitting adaptor Y (Part No. 626210) for single outlet and X (Part No.626209) for double outlet (see following page). When single outlet feeders are used the discharge per complete cycle = 3-24 cc./stroke (.183-1.464 cu.in./stroke).

Dimensions: (Refer to Fig. 2.).

Mounting: (Refer to Fig. 2.).Aluminium bushings



(Part No. 3008107) are supplied for mounting on uneven surfaces to prevent distortion or damage due to overtightening.

FUNCTION

2 OUTLETS

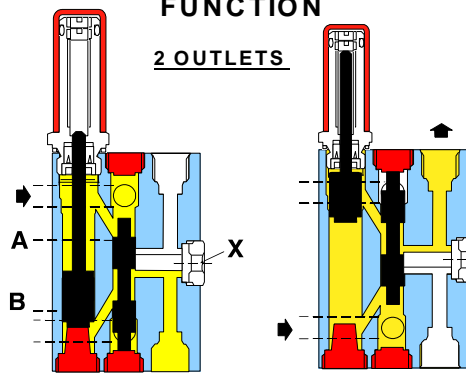


FIG. D.

FIG. E.

1 OUTLET

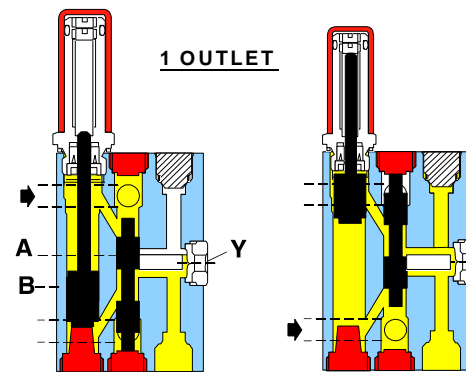
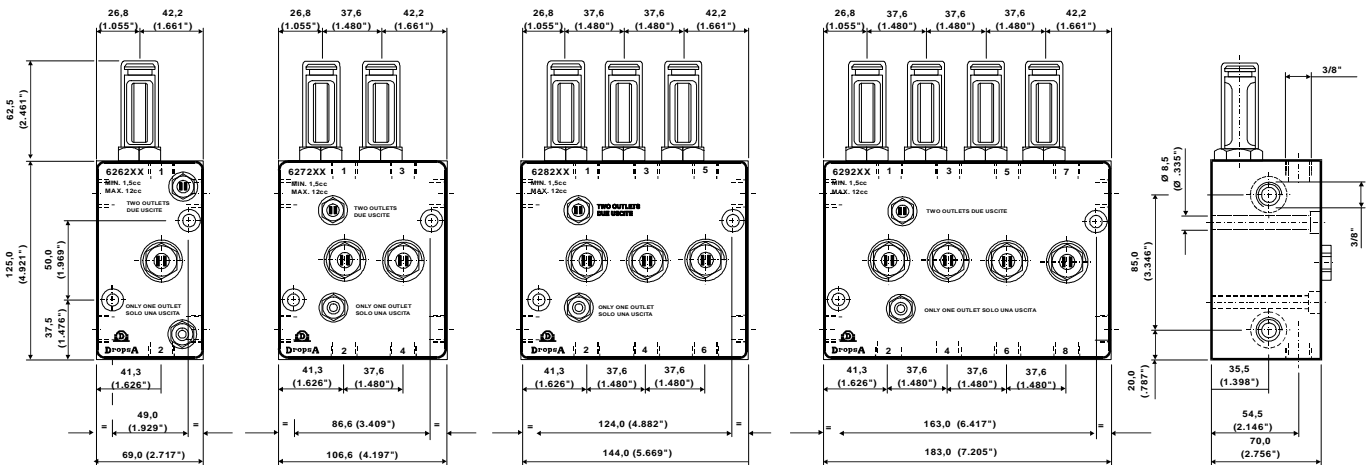


FIG. F.

FIG. G.



Aluminium cover (optional)

Part No. 626021

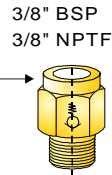
Metacrylate cover

Part No. 3042118

Dropsa Standard feeder blocks are normally supplied with outlets having a conical seating for Ø10 mm. (3/8") tube.

This is simple and cost effective as no fitting is required.

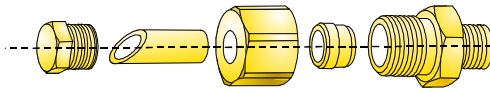
If required a check-valve Part No. 92326 BSP or Part No. 92359 NPTF can be fitted at the outlet. Order separately.



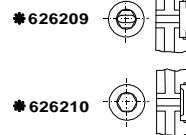
Seal Part No. 19119

DROPSA STANDARD Ø mm.			
Cone	Bush	Ø Tube	Plug
93010	92010	Ø 10	91003

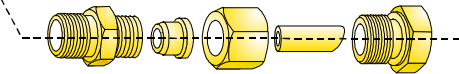
INLET 3/8"



DROPSA STANDARD BSP Ø mm.				
Plug	Tube Ø	Nut	Ring	Fitting
926002	Ø 10	91406	91601	92269
	Ø 12	91411	91607	92240
	Ø 16	91416	91612	92241
NPTF DRY SEAL Ø INCHES				
850282	Ø 3/8	850202	850222	850255
	Ø 1/2	850203	850223	850257
	Ø 5/8	850204	850224	850259



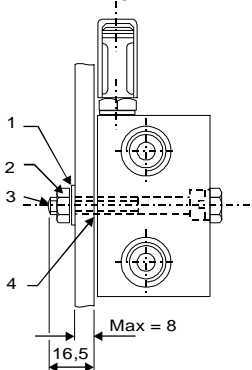
OUTLET 3/8"



NPTF DRY SEAL Ø INCHES				
Part No.	Part No.	Part No.	Ø	Part No.
850253	850221	850201	Ø 5/16	
850255	850222	850202	Ø 3/8	850282
850257	850223	850203	Ø 1/2	

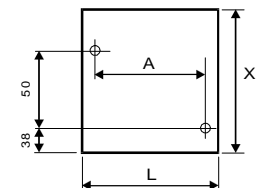
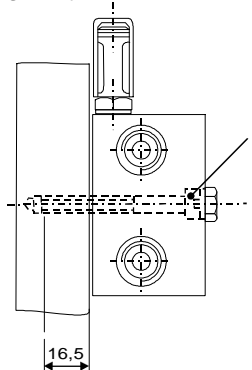
*The double outlet adaptor (626209) is identifiable by two parallel line markings in the centre; the single outlet adaptor (626210) has a circular marking only.

WELD PLATES FOR FEEDERS



The fixing parts which are indicated thus • are to be ordered separately.

Pos.	Part No.	Qty.	Description	
• 1	16012	2	Spring washer	Metric
• 2	16406	2	Nut M8 - Hex	
• 3	12556	2	Screw M8 x 80	
4	3008107	2	Bushing	
• 1	16012	2	Spring washer	Inch
• 2	16500	2	Nut 5/16-24 UNF	
• 3	12560	2	Screw 5/16-24 UNF x 3-1/4	
4	3008107	2	Bushing	



Pos.	Part No.	Dimensions (inches)		
		A	L	X
1	111576	49 (1.929")	70 (2.755")	190 (7.480")
2	111577	86 (3.385")	110 (4.330")	190 (7.480")
		124 (4.881")	150 (5.905")	190 (7.480")
3	111578	163 (6.417")	183 (7.204")	190 (7.480")
4	111579	163 (6.417")	183 (7.204")	190 (7.480")

ITALIA
Dropsa SpA
t. +39 02-250791
f.+39 02-25079767

U.K.
Dropsa (UK) Ltd
t. +44 (0)1784-431177
f. +44 (0)1784-438598

GERMANY
Dropsa GmbH
t. +49 (0)211-394-011
f. +49 (0)211-394-013

FRANCE
Dropsa Ame
t. +33 (0)1-3993-0033
f. +33 (0)1-3986-2636

CHINA
Dropsa Lubrication Systems
(Shanghai) Co., Ltd
t. +86 (021) 67740275
f. +86 (021) 67740205

U.S.A.
Dropsa USA Incorporated
t. +1 586-566-1540
f. +1 586-566-1541

AUSTRALIA
Dropsa Australia Pty
t. +61 (0)2-9938-6644
f. +61 (0)2-9938-6611

BRAZIL
Dropsa Do Brasil Ind.e
Com.Ltda
t. +55 (0)11-563-10007
f. +55 (0)11-563-19408